



House 'To Let'

£1,295 PCM

Itchington, Alveston



#### KEY FEATURES

Two-Bedroom - Detached Annexe - Kitchen/Dining Area - Lounge - Utility Room - Master Bedroom With En-Suite Shower Room - Bedroom Two With En-Suite Shower Room - Off Road Parking For Two Cars- Village Location - Out Side Storage - Water & Sewage Included - Unfurnished.

**EPC - E - DEPOSIT £1494.00**

## Description

This well presented two bedroom unfurnished stable conversion comprising open plan lounge/diner with wood burning stove, patio doors over looking open fields, kitchen with electric hob and utility room. Two bedrooms both with en-suite showers, off street parking for one/two cars, small decking area with views of open countryside, double glazing and electric central heating. No dogs due to the farming set up. Water & Sewage Included. Available mid October for six months to long term.



## Situation

The village of Itchington is situated a short drive south of M5 Junction 14 - ideal for commuters to Bristol or Cheltenham/Gloucester. The nearby local centres of Thornbury and Wotton-under-Edge provide excellent shopping facilities and amenities. Locally the village of Tytherington has a community shop with post office, a public house, church and a playgroup in the village hall. The excellent village website [www.tytherington.com](http://www.tytherington.com) provides a wealth of further information.



## Local Authority & Council Tax

Council Tax Band - A



## Contact & Viewing

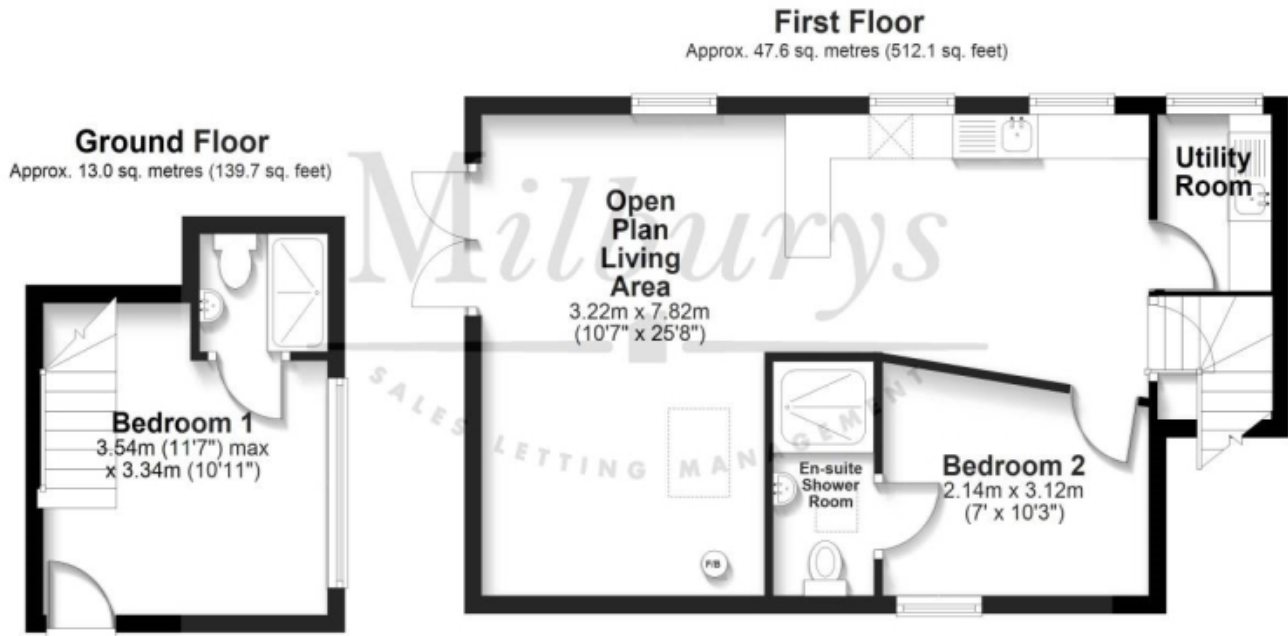
T: 01454 417336

w: [www.milburys.co.uk](http://www.milburys.co.uk)





## Floorplan



## Additional Photos



## Important Notice

Milburys Estate Agents Ltd, their clients and any joint agents give notice that they have not tested any apparatus, equipment, fixtures, fittings, heating systems, drains or services and so cannot verify they are in working order or fit for their purpose. Interested parties are advised to obtain verification from their surveyor or relevant contractor. Statements pertaining to tenure are also given in good faith and should be verified by your legal representative. Digital images may, on occasion, include the use of a wide-angle lens. Please ask if you have any queries about any of the images shown, prior to viewing. Where provided, floor plans are shown purely as an indication of layout. They are not scale drawings and should not be treated as such. Complete listings and full details of all our properties (both for sale and to let) are available at [www.milburys.co.uk](http://www.milburys.co.uk)