



Barn Conversion 'To Let'

£1,250 PCM

Bilsham Lane, Northwick



KEY FEATURES

Two-Double Bedroom - Barn Conversion - Open Plan Living – Kitchen With New Electric Cooker (Space for Washing Machine & Tall Fridge/Freezer) - NEW Upvc Double Glazing - Rural Setting - Courtyard Garden - Allocated Parking for 2/3 Cars – White Bathroom Suite – Unfurnished – Would Suit Professional Person/Couple – Not Suitable For Pets Or Children As The Property Is On A Working Farm.

EPC - [[EPCImages.EERImage.CurrentAsLetter]] - DEPOSIT £1442.00

Description

A Well-Presented Two-Bedroom Barn Conversion in a Rural Setting. Situated in a picturesque rural location with far-reaching countryside views, this well-presented two-bedroom barn conversion is offered to let on an unfurnished basis. The accommodation comprises an entrance hallway, a spacious open-plan lounge/dining area, and a fully fitted kitchen. The master bedroom benefits from an en-suite shower room, while the second bedroom features built-in wardrobes. The main bathroom is fitted with a white suite and includes a hand-held mixer shower over the bath. Externally, the property offers allocated parking for two to three vehicles and a private courtyard garden enjoying views across the surrounding countryside. Available from 1st August for a minimum term of six months, with potential for a longer tenancy. Non-smokers only. EPC (C)



Situation

Northwick is a little Hamlet of houses with a primary school not far from its neighbour Pilning which is situated approximately 3 miles to the northwest of M5 J17 along the B4055, convenient for The Mall, Bristol North/West and the M4/M5 interchange. The A403 connects with the Severn Bridge at J1 of the M48. There is a rail-link 1.5 miles away in Severn Beach which connects to Clifton Down and Templemeads stations. The village has a church, two pubs, a village shop with post office and St. Peters Primary School www.stpetersprimary.co.uk. The nearest secondary school is Marlwood School at Alveston www.marlwood.com.



Local Authority & Council Tax

South Gloucestershire Council
Council Tax Band -



Contact & Viewing

T: 01454 417336
w: www.milburys.co.uk

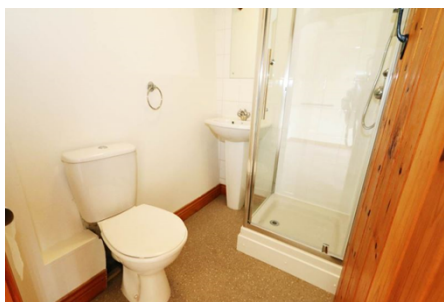


Floorplan

Ground Floor



Additional Photos



Important Notice

Milburys Estate Agents Ltd, their clients and any joint agents give notice that they have not tested any apparatus, equipment, fixtures, fittings, heating systems, drains or services and so cannot verify they are in working order or fit for their purpose. Interested parties are advised to obtain verification from their surveyor or relevant contractor. Statements pertaining to tenure are also given in good faith and should be verified by your legal representative. Digital images may, on occasion, include the use of a wide-angle lens. Please ask if you have any queries about any of the images shown, prior to viewing. Where provided, floor plans are shown purely as an indication of layout. They are not scale drawings and should not be treated as such. Complete listings and full details of all our properties (both for sale and to let) are available at www.milburys.co.uk