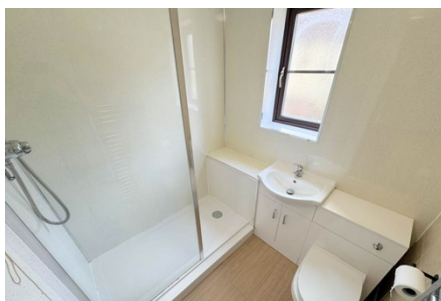




Flat / Apartment 'To Let'

£800 PCM

The Brambles, Berkeley



KEY FEATURES

One Bedroom Flat - Ground Floor - Lounge - New Fitted Kitchen - Shower Room - Allocated Parking - Gas Central Heating - Double Glazing - Enclosed Garden - Convenient to High Street - Unfurnished
EPC - C - DEPOSIT £923.00

Description

A one bedroom ground floor flat situated in the historic market town of Berkeley. The property has been redecorated throughout and the unfurnished accommodation comprises; double bedroom with built in wardrobes, lounge, new fitted kitchen and a shower room. The property benefits from double glazing and gas central heating. Outside there is an enclosed rear garden and allocated parking for one car. Would ideally suit a single person, non smokers only. Available mid August 2025 for six months to long term.



Situation

Berkeley is a thriving small rural town located to the west of the M5 and A38, north of Bristol and south of Gloucester and Cheltenham. Rich in history, the town is home to Berkeley Castle, which has been the residence of the Berkeley family for over 900 years and remains a popular and fascinating historical attraction. Berkeley also holds a significant place in medical history as the home of Edward Jenner, the pioneer of the smallpox vaccine. The Jenner Museum, dedicated to his life and work, is just a short walk from this property—along the lane opposite, past the brick cottage Jenner gifted to James Phipps, the first person to receive an inoculation. The town offers a good range of amenities including local shops, a bank, building society, hotel, traditional public houses, and a primary school, making it a well-connected and characterful place to live.

Local Authority & Council Tax

StroudDistrictCouncil
Council Tax Band - A

Contact & Viewing

T: 01454 417336
w: www.milburys.co.uk

Floorplan



Additional Photos

Important Notice

Milburys Estate Agents Ltd, their clients and any joint agents give notice that they have not tested any apparatus, equipment, fixtures, fittings, heating systems, drains or services and so cannot verify they are in working order or fit for their purpose. Interested parties are advised to obtain verification from their surveyor or relevant contractor. Statements pertaining to tenure are also given in good faith and should be verified by your legal representative. Digital images may, on occasion, include the use of a wide-angle lens. Please ask if you have any queries about any of the images shown, prior to viewing. Where provided, floor plans are shown purely as an indication of layout. They are not scale drawings and should not be treated as such. Complete listings and full details of all our properties (both for sale and to let) are available at www.milburys.co.uk