



Flat / Apartment 'To Let'  
**£1,125 PCM**  
Gloucester Terrace, Thornbury



**KEY FEATURES**

Unfurnished - Purpose-Built Top Floor Apartment - Central Location Convenient High Street Shops And Amenities - Allocated Parking Space - Communal Outside Space - Security Entry System - Hallway With Storage Cupboard And Separate Airing Cupboard - Lounge/Dining Room With Window To Front - Smart Fitted Kitchen With Integrated Oven And Hob, Free Standing Fridge/Freezer And Washing Machine - Two Bedrooms - Bathroom With Shower Over Bath - Electric Heating - Upvc Double-Glazing  
**EPC - [[EPCImages.EERImage.CurrentAsLetter]] - DEPOSIT £1298.00**

## Description

**\*\*Rent Inclusive of WiFi & TV (via Virgin Media)\*\*** Tucked away just a short walk from the amenities of the High Street is this smartly presented modern development of purpose-built apartments. This particular one is on the first floor, accessed via a communal entrance hall shared with just three other properties. Step inside No.8 to discover a private internal hallway with security entrance phone, a very useful storage cupboard and a separate airing cupboard as well. The generous lounge/dining room faces out through a window to the front of the property. A door leads through to a smart fitted kitchen with integrated oven, hob and washing machine. There are two bedrooms (one with a good size free standing wardrobe) and a bathroom with a modern suite with shower over the bath. Heating is electric and the windows are Upvc double-glazed. The apartment comes with a numbered parking space plus visitor spaces for guests. Available on an unfurnished basis from 8th November 2025.



## Situation

Thornbury is a thriving market town to the north of the City of Bristol and the M4/M5 interchange, with excellent commuting links via the motorway network and by rail from Bristol Parkway Station (Paddington/South Wales). The High Street offers a wide variety of shops, cafes, pubs and restaurants. Other facilities include the leisure centre, golf course and library, plus open community spaces, parks and sports grounds/clubs. The town is blessed with a number of primary and junior schools, plus The Castle secondary school ([www.thecastleschool.org.uk](http://www.thecastleschool.org.uk)) which is situated on the edge of open countryside close to Thornbury's Tudor Castle, now a luxury hotel.



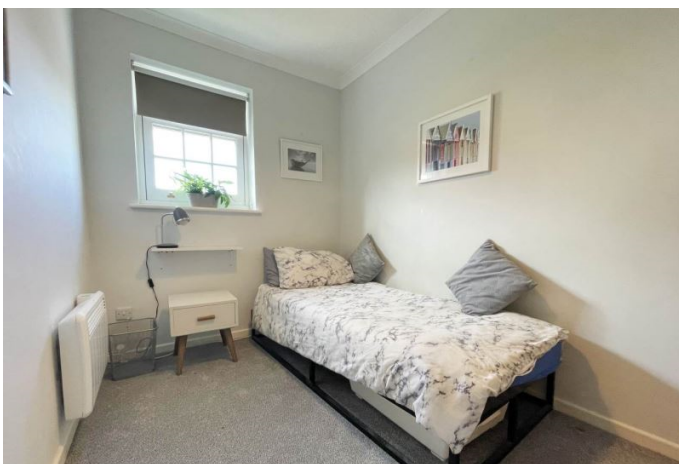
## Local Authority & Council Tax

South Gloucestershire Council  
Council Tax Band - C



## Contact & Viewing

T: 01454 417336  
w: [www.milburys.co.uk](http://www.milburys.co.uk)



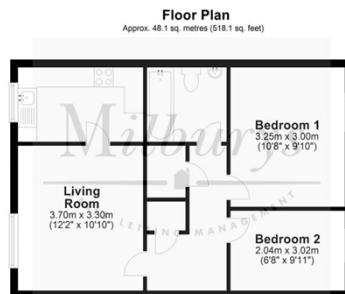


## Floor Plan

Approx. 48.1 sq. metres (518.1 sq. feet)



## Additional Photos



## Important Notice

Milburys Estate Agents Ltd, their clients and any joint agents give notice that they have not tested any apparatus, equipment, fixtures, fittings, heating systems, drains or services and so cannot verify they are in working order or fit for their purpose. Interested parties are advised to obtain verification from their surveyor or relevant contractor. Statements pertaining to tenure are also given in good faith and should be verified by your legal representative. Digital images may, on occasion, include the use of a wide-angle lens. Please ask if you have any queries about any of the images shown, prior to viewing. Where provided, floor plans are shown purely as an indication of layout. They are not scale drawings and should not be treated as such. Complete listings and full details of all our properties (both for sale and to let) are available at [www.milburys.co.uk](http://www.milburys.co.uk)