

Flat / Apartment 'To Let'

£995 PCM

Frome Court House, Thornbury



KEY FEATURES

Modern First Floor Apartment - Double Bedroom - Hallway With Large Cupboard - Modern White Bathroom Suite With Shower Over Bath - Fitted Kitchen with Oven and Hob, Dish Washer, Fridge & Freezer & Washing Machine - Open Plan Lounge/Kitchen Area - Allocated Off Road Parking - Unfurnished
EPC - B - DEPOSIT £1148.00

Description

This modern purpose built one bedroom first floor apartment is situated within walking distance to Thornbury town centre and all of the facilities of this bustling market town. The modern accommodation is offered on an unfurnished basis which includes entrance hall with fitted cupboard, open plan kitchen/living room with fitted white goods, master bedroom and a modern white bathroom suite with shower over the bath. Benefits include security entrance system, electric heating, double-glazed windows and allocated off street parking. Non smokers only and no pets. Would suit a single person or couple. Available 1st September for six months to long term. (EPC - B)



Situation

Thornbury is a thriving market town where the High Street offers a variety of shops, cafes, pubs and restaurants. Facilities include the Leisure Centre, Golf Course and Library. The town is blessed with a number of primary and junior schools, all feeding into The Castle secondary school (www.castle.gloucs.sch.uk) which is situated on the edge of open countryside close to Thornbury Castle.



Local Authority & Council Tax

South Gloucestershire Council
Council Tax Band - A

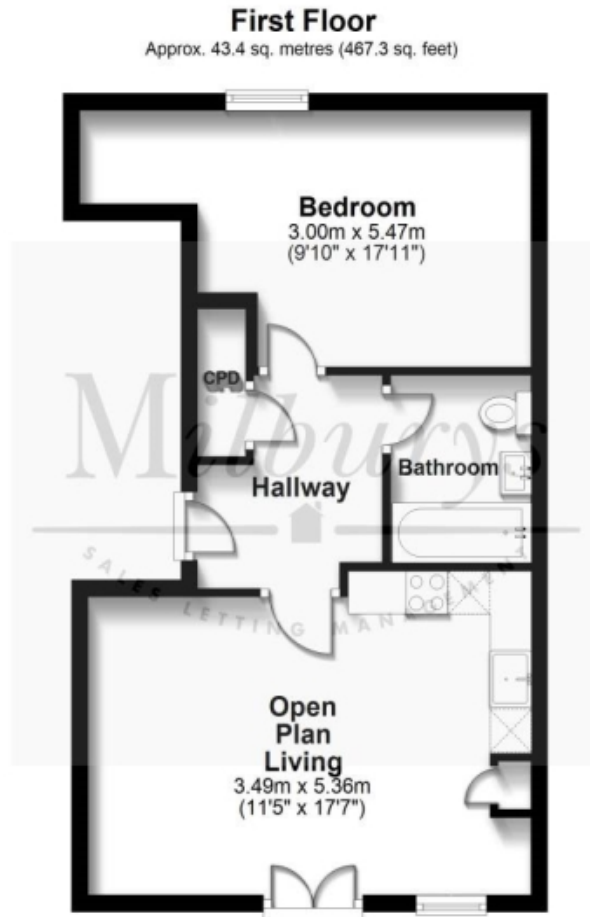


Contact & Viewing

T: 01454 417336
w: www.milburys.co.uk



Floorplan



Additional Photos



Important Notice

Milburys Estate Agents Ltd, their clients and any joint agents give notice that they have not tested any apparatus, equipment, fixtures, fittings, heating systems, drains or services and so cannot verify they are in working order or fit for their purpose. Interested parties are advised to obtain verification from their surveyor or relevant contractor. Statements pertaining to tenure are also given in good faith and should be verified by your legal representative. Digital images may, on occasion, include the use of a wide-angle lens. Please ask if you have any queries about any of the images shown, prior to viewing. Where provided, floor plans are shown purely as an indication of layout. They are not scale drawings and should not be treated as such. Complete listings and full details of all our properties (both for sale and to let) are available at www.milburys.co.uk