



## Barn Conversion 'To Let'

£1,250 PCM

The Old Cow Byre, Old Gloucester Road



### KEY FEATURES

Detached - Grade Two Listed - Single Storey - One Bedroom - Barn Conversion - Rural Position - Double Glazing - Garden - Allocated Off Parking - Unfurnished.

**EPC - [[EPCImages.EERImage.CurrentAsLetter]] - DEPOSIT £1442.00**

## Description

This delightful Grade II detached barn conversion must be viewed. Situated in a rural position within driving distance of the thriving market town of Thornbury the accommodation is offered on an unfurnished basis and comprises; double bedroom, open plan lounge/kitchen/diner (with white goods) and bathroom. Outside there is a lawned area and parking for two cars. Available 1st April 2023 for six months to long term. Would ideally suit a professional couple or single person. No pets or smokers.



## Situation

Thornbury is a thriving market town where the High Street offers a variety of shops, cafes, pubs and restaurants. Facilities include the Leisure Centre, Golf Course and Library. The town is blessed with a number of primary and junior schools, plus The Castle secondary school ([www.castle.gloucs.sch.uk](http://www.castle.gloucs.sch.uk)) which is situated on the edge of open countryside close to Thornbury Castle.



## Local Authority & Council Tax

South Gloucestershire Council  
Council Tax Band - C



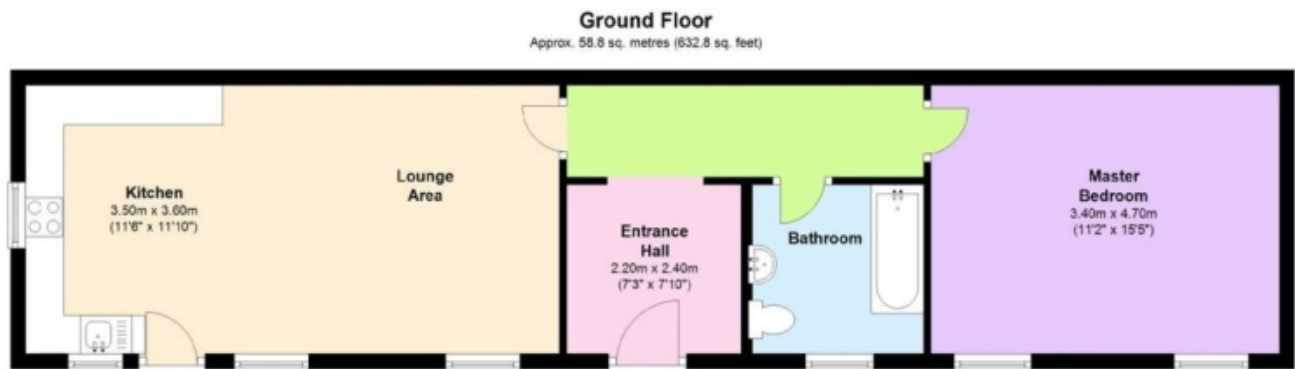
## Contact & Viewing

T: 01454 417336  
w: [www.milburys.co.uk](http://www.milburys.co.uk)

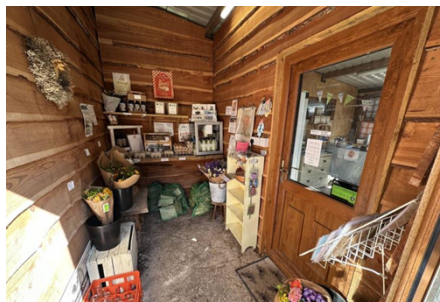




## Floorplan



## Additional Photos



## Important Notice

Milburys Estate Agents Ltd, their clients and any joint agents give notice that they have not tested any apparatus, equipment, fixtures, fittings, heating systems, drains or services and so cannot verify they are in working order or fit for their purpose. Interested parties are advised to obtain verification from their surveyor or relevant contractor. Statements pertaining to tenure are also given in good faith and should be verified by your legal representative. Digital images may, on occasion, include the use of a wide-angle lens. Please ask if you have any queries about any of the images shown, prior to viewing. Where provided, floor plans are shown purely as an indication of layout. They are not scale drawings and should not be treated as such. Complete listings and full details of all our properties (both for sale and to let) are available at [www.milburys.co.uk](http://www.milburys.co.uk)