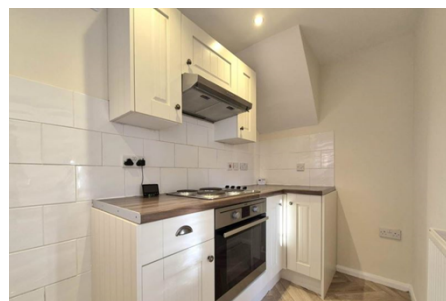




End Terrace House 'To Let'

£1,195 PCM

Long Street, Dursley



KEY FEATURES

End of Terrace House – Lounge with Understairs Cupboard Housing feed for Washing Machine – Kitchen with Cooker and Space for Fridge/Freezer – Two Bedrooms – Bathroom – Gas Central Heating – Double Glazing – Garden – Parking for One Car – Unfurnished.

EPC - D - DEPOSIT £1378.00

Description

This end of terrace house is set back from Long Street, within walking distance to Dursley High Street. It has its own private garden area and off-street parking space. Accommodation includes a lounge/diner, kitchen with cooker and space for fridge/freezer, two bedrooms and a bathroom. Additional benefits include gas central heating and double glazing. Available now for twelve months to long term. (EPC-D)



Situation

The market town of Dursley sits on the edge of the Cotswold escarpment where it drops off towards the Severn Vale and the River Severn. Dursley's main watercourse is the River Cam and the town has attractive woodland and countryside surrounds. Major road networks are easily reached as it is approx 5.4 miles from the M5 junction 13 and 7.8 miles to Junction 14. Likewise Cam/Dursley has its own train link to Bristol. Rednock Secondary School is extremely popular, plus there is a selection of local shops, Swimming pool, and a Sainsbury's store.



Local Authority & Council Tax

StroudDistrictCouncil
Council Tax Band - B



Contact & Viewing

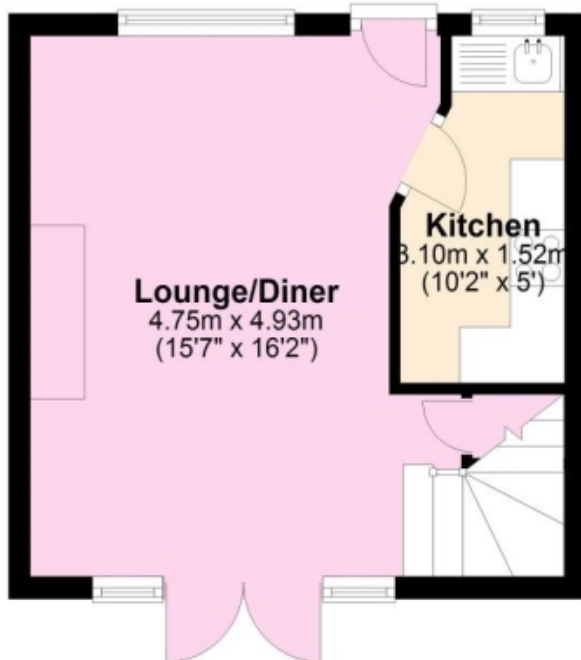
T: 01454 417336
w: www.milburys.co.uk



Floorplan

Ground Floor

Approx. 23.8 sq. metres (255.8 sq. feet)

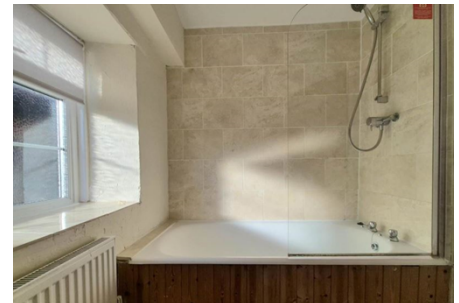
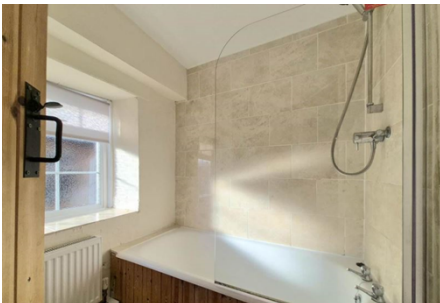


First Floor

Approx. 23.8 sq. metres (255.8 sq. feet)



Additional Photos



Important Notice

Milburys Estate Agents Ltd, their clients and any joint agents give notice that they have not tested any apparatus, equipment, fixtures, fittings, heating systems, drains or services and so cannot verify they are in working order or fit for their purpose. Interested parties are advised to obtain verification from their surveyor or relevant contractor. Statements pertaining to tenure are also given in good faith and should be verified by your legal representative. Digital images may, on occasion, include the use of a wide-angle lens. Please ask if you have any queries about any of the images shown, prior to viewing. Where provided, floor plans are shown purely as an indication of layout. They are not scale drawings and should not be treated as such. Complete listings and full details of all our properties (both for sale and to let) are available at www.milburys.co.uk