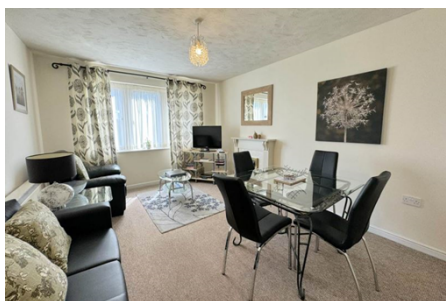




Flat / Apartment 'To Let'
£1,095 PCM
Orchard Gate, Bradley Stoke



KEY FEATURES

One Bedroom Apartment - Ground Floor - Lounge/Dining Room - Fitted Kitchen - Double Bedroom - Bathroom With Shower - Well Presented - Unallocated Parking - Close To The Aztec West Business Park - Unfurnished
EPC - C - DEPOSIT £1263.00

Description

A well presented one bedroom ground floor apartment close to the Aztec West Business Park. The accommodation is offered on an unfurnished basis and comprises hallway, lounge/diner, kitchen with built in electric cooker, double bedroom and bathroom with shower over the bath. Further benefits include double glazing, electric heating and allocated off road parking for one car. Would suit a single person or couple. Not suitable for pets or children. Non smokers only. Available now for six months to long term.

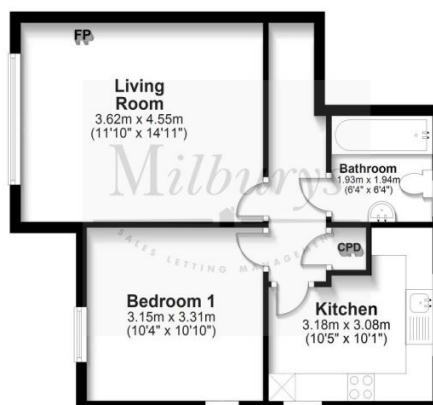


Situation

Bradley Stoke is situated on the north side of the city of Bristol with excellent access to the M4/M5 motorways, Parkway Railway Station and only 6 miles into the city centre. Named after the local Bradley Brook and Stoke Brook streams, the town was planned in the 1970s and building began in 1987. There are six primary schools, a secondary school, Bradley Stoke Community School, leisure centre with a swimming pool, a library and a doctor and dentist surgery. The town centre, Willow Brook Centre, opened in 2008 featuring around 18 shops

Ground Floor

Approx. 45.4 sq. metres (488.8 sq. feet)



Local Authority & Council Tax

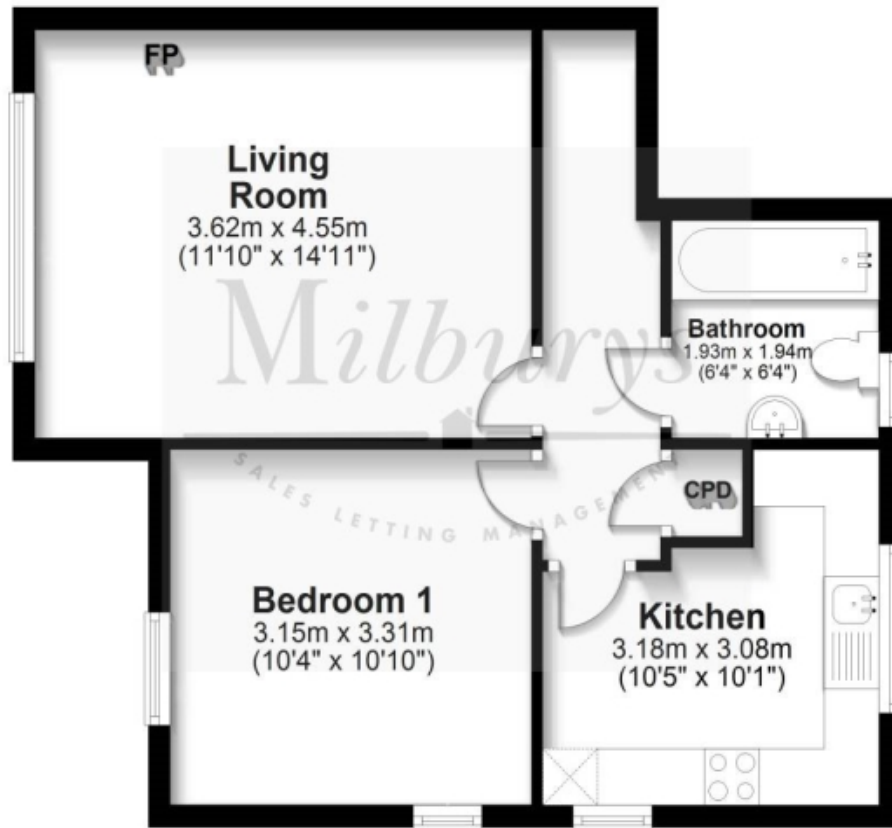
South Gloucestershire Council
Council Tax Band - B

Contact & Viewing

T: 01454 417336
w: www.milburys.co.uk

Ground Floor

Approx. 45.4 sq. metres (488.8 sq. feet)



Additional Photos

Important Notice

Milburys Estate Agents Ltd, their clients and any joint agents give notice that they have not tested any apparatus, equipment, fixtures, fittings, heating systems, drains or services and so cannot verify they are in working order or fit for their purpose. Interested parties are advised to obtain verification from their surveyor or relevant contractor. Statements pertaining to tenure are also given in good faith and should be verified by your legal representative. Digital images may, on occasion, include the use of a wide-angle lens. Please ask if you have any queries about any of the images shown, prior to viewing. Where provided, floor plans are shown purely as an indication of layout. They are not scale drawings and should not be treated as such. Complete listings and full details of all our properties (both for sale and to let) are available at www.milburys.co.uk