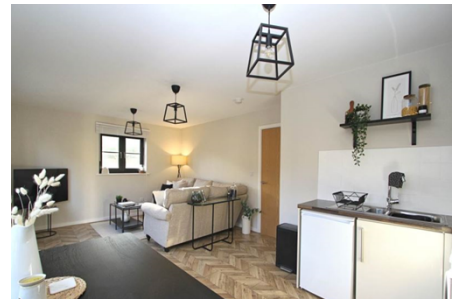


Flat / Apartment 'To Let'  
£1,200 PCM  
Britannia Mews, Wotton-under-Edge



#### KEY FEATURES

Ground Floor Apartment - Short Walk to Wotton-under-Edge High Street - Immaculately Presented Throughout - Entrance Hall with Storage Cupboard - Open Plan Living/Kitchen/Diner - Modern Kitchen with Cooker, Hob, Extractor Fan, Washing Machine, Fridge and Freezer - Two Double Bedrooms - Wardrobe and En-Suite Shower Room to Main Bedroom - Bathroom - Gas Central Heating - Double Glazing - Allocated Off Road Parking for One Car, plus Visitor Spaces - Bin Storage Area - Unfurnished.  
**EPC - [[EPCImages.EERImage.CurrentAsLetter]] - DEPOSIT £1384.00**

## Description

This ground floor apartment is immaculately presented throughout. It is within walking distance to Wotton-under-Edge High Street, and is set in an attractive modern development. The property is accessed via a communal entrance hall, which is well maintained. Inside, there is a beautiful modern kitchen (with white goods), open to the lounge and dining area. There are two double bedrooms, with the main bedroom having an en-suite shower room and wardrobe. There is also an entrance hall with storage cupboard and a well appointed bathroom. Additional benefits include gas central heating, double glazing and allocated off road parking for one car. Available from the 17th of February 2023 for six months to long term. No smokers. Highly Recommended. (EPC-B)



## Situation

Situated on the Cotswold Way, this charming character Market Town has an eclectic mix of local shops and businesses on its vibrant High Street. Golf courses, beautiful surrounding countryside plus access to Tetbury (approx 10.1 miles), Cirencester, Bristol and the M5 (Junction 14 is approx 5.1 miles) make an ideal location for families, commuters and outdoor enthusiasts. The nearby Katharine Lady Berkeley's Secondary School (approx 0.7 miles) is an important element in the town plus there are two infants' schools in Wotton under Edge.



## Local Authority & Council Tax

StroudDistrictCouncil  
Council Tax Band - B



## Contact & Viewing

T: 01454 417336  
w: [www.milburys.co.uk](http://www.milburys.co.uk)



## Ground Floor

Approx. 62.8 sq. metres (676.0 sq. feet)



## Additional Photos



## Important Notice

Milburys Estate Agents Ltd, their clients and any joint agents give notice that they have not tested any apparatus, equipment, fixtures, fittings, heating systems, drains or services and so cannot verify they are in working order or fit for their purpose. Interested parties are advised to obtain verification from their surveyor or relevant contractor. Statements pertaining to tenure are also given in good faith and should be verified by your legal representative. Digital images may, on occasion, include the use of a wide-angle lens. Please ask if you have any queries about any of the images shown, prior to viewing. Where provided, floor plans are shown purely as an indication of layout. They are not scale drawings and should not be treated as such. Complete listings and full details of all our properties (both for sale and to let) are available at [www.milburys.co.uk](http://www.milburys.co.uk)