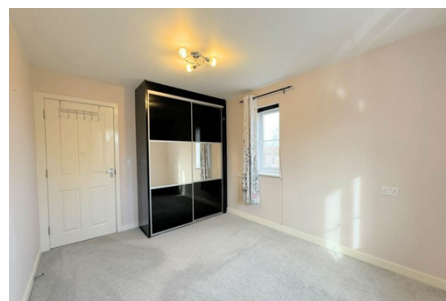




Flat / Apartment 'To Let'

£1,175 PCM

Leaze Close, Thornbury



#### KEY FEATURES

Purpose Built Apartment - Top Floor - Gas Central Heating - Double Glazing - Two Bedrooms - Bathroom With Shower Over Bath - Kitchen With White Goods - Allocated Parking - Unfurnished.

**EPC - C - DEPOSIT £1355.00**

## Description

An unfurnished two bedroom apartment which provides good access to all of the High Street facilities of this bustling market town. Quality unfurnished accommodation which includes entrance hall, lounge/dining room with Juliette balcony, fitted kitchen, two bedrooms and a modern bathroom suite with shower over the bath. Benefits include security entrance system, upvc double-glazed windows, gas central heating and allocated off street parking for one car. Would suit a couple or single person, non smokers only. Available now for six months to long term



## Situation

Thornbury is a thriving market town where the High Street offers a variety of shops, cafes, pubs and restaurants. Facilities include the Leisure Centre, Golf Course and Library. The town is blessed with a number of primary and junior schools, all feeding into The Castle secondary school ([www.castle.gloucs.sch.uk](http://www.castle.gloucs.sch.uk)) which is situated on the edge of open countryside close to Thornbury Castle.



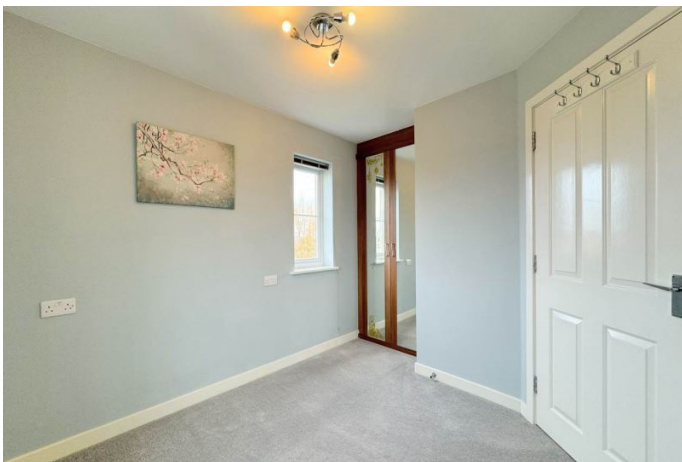
## Local Authority & Council Tax

South Gloucestershire Council  
Council Tax Band - B



## Contact & Viewing

T: 01454 417336  
w: [www.milburys.co.uk](http://www.milburys.co.uk)



## Floorplan

### Second Floor

Approx. 57.9 sq. metres (622.8 sq. feet)



## Additional Photos



## Important Notice

Milburys Estate Agents Ltd, their clients and any joint agents give notice that they have not tested any apparatus, equipment, fixtures, fittings, heating systems, drains or services and so cannot verify they are in working order or fit for their purpose. Interested parties are advised to obtain verification from their surveyor or relevant contractor. Statements pertaining to tenure are also given in good faith and should be verified by your legal representative. Digital images may, on occasion, include the use of a wide-angle lens. Please ask if you have any queries about any of the images shown, prior to viewing. Where provided, floor plans are shown purely as an indication of layout. They are not scale drawings and should not be treated as such. Complete listings and full details of all our properties (both for sale and to let) are available at [www.milburys.co.uk](http://www.milburys.co.uk)