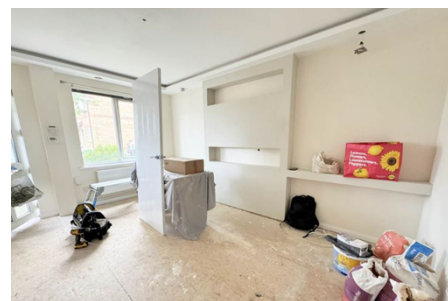




House 'To Let'

£1,375 PCM

Somerby Close, Bradley Stoke



KEY FEATURES

End Terraced House - Close to Local Amenities - Lounge - New Fitted Kitchen - Two Bedrooms - New Bathroom suite With Shower Over Bath - Larger Than Average Rear Garden - Double Glazing - Off Street Parking for two Cars - Gas Central Heating - Unfurnished.

EPC - C - DEPOSIT £1556.00

Description

Available to let is this superb 2-bedroom end-of-terrace property, currently undergoing a full refurbishment to a high standard. Perfect for professionals, couples, or small families, this home combines modern comfort with practical features in a sought-after location. Inside, the property will boast a brand-new fitted kitchen and a contemporary bathroom suite, along with fresh redecoration throughout and new carpets in every room, creating a clean, stylish, and move-in-ready space. Externally, the home benefits from a larger than average, low-maintenance garden—ideal for outdoor relaxation or entertaining—with the added bonus of allocated parking for two cars. Don't miss this opportunity to secure a freshly modernised home in a desirable area. Early viewing is highly recommended (To check broadband and mobile phone coverage please visit Ofcom - ofcom.org.uk/phones-telecoms-and-internet/advice-for-consumers/advice/ofcom-checker)



Situation

Bradley Stoke is situated on the north side of the city of Bristol with excellent access to the M4/M5 motorways, Parkway Railway Station and only 6 miles into the city centre. Named after the local Bradley Brook and Stoke Brook streams, the town was planned in the 1970s and building began in 1987. There are six primary schools, a secondary school, Bradley Stoke Community School, leisure centre with a swimming pool, a library and a doctor and dentist surgery. The town centre, Willow Brook Centre, opened in 2008 featuring around 18 shops.



Local Authority & Council Tax

South Gloucestershire Council
Council Tax Band - B



Contact & Viewing

T: 01454 417336
w: www.milburys.co.uk



Floorplan



Additional Photos



Important Notice

Milburys Estate Agents Ltd, their clients and any joint agents give notice that they have not tested any apparatus, equipment, fixtures, fittings, heating systems, drains or services and so cannot verify they are in working order or fit for their purpose. Interested parties are advised to obtain verification from their surveyor or relevant contractor. Statements pertaining to tenure are also given in good faith and should be verified by your legal representative. Digital images may, on occasion, include the use of a wide-angle lens. Please ask if you have any queries about any of the images shown, prior to viewing. Where provided, floor plans are shown purely as an indication of layout. They are not scale drawings and should not be treated as such. Complete listings and full details of all our properties (both for sale and to let) are available at www.milburys.co.uk