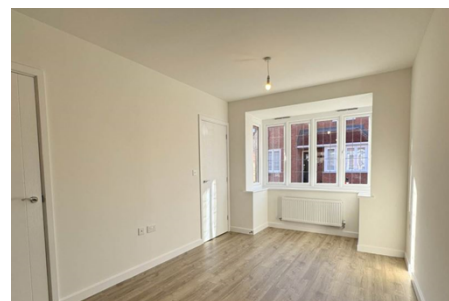




House 'To Let'  
£2,100 PCM  
Nelmes Close, Thornbury



**KEY FEATURES**

Four Bedroom Superior Detached Property - Off Road Allocated Parking For Three Cars - Good Size Single Garage - EV Charging Point - Four Double Bedrooms - En-Suite Shower Room - Family Bathroom - Two Receptions Rooms - Study - Cloakroom - Enclosed Rear Garden - Double Glazing - Gas C/H  
**EPC - B - DEPOSIT £2423.07**

## Description

Milburys are pleased to welcome to the market this brand new, modern four bedroom detached property. This luxurious family home, is offered on an unfurnished basis comprising kitchen/diner with a central kitchen island and French doors to the garden, good size lounge, separate study, downstairs WC and a built in storage cupboard off the hallway. Upstairs you will find four double bedrooms with a spacious principal bedroom with an en-suite shower room, family bathroom with separate shower cubicle and a linen cupboard off the landing. Outside the property benefits from a good size single garage with power and lighting, allocated parking for at least three cars, EV charging point and enclosed rear garden. Would ideally suit a family, non smokers only. Available now.



## Situation

Thornbury is a thriving market town to the north of the City of Bristol and the M4/M5 interchange, with excellent commuting links via the motorway network and by rail from Bristol Parkway Station (Paddington/South Wales). The High Street offers a wide variety of shops, cafes, pubs and restaurants. Other facilities include the leisure centre, golf course and library, plus open community spaces, parks and sports grounds/clubs. The town is blessed with a number of primary and junior schools, plus The Castle secondary school ([www.the-castleschool.org.uk](http://www.the-castleschool.org.uk)) which is situated close to Thornbury's Tudor Castle, a luxury hotel.



## Local Authority & Council Tax

South Gloucestershire Council  
Council Tax Band - F

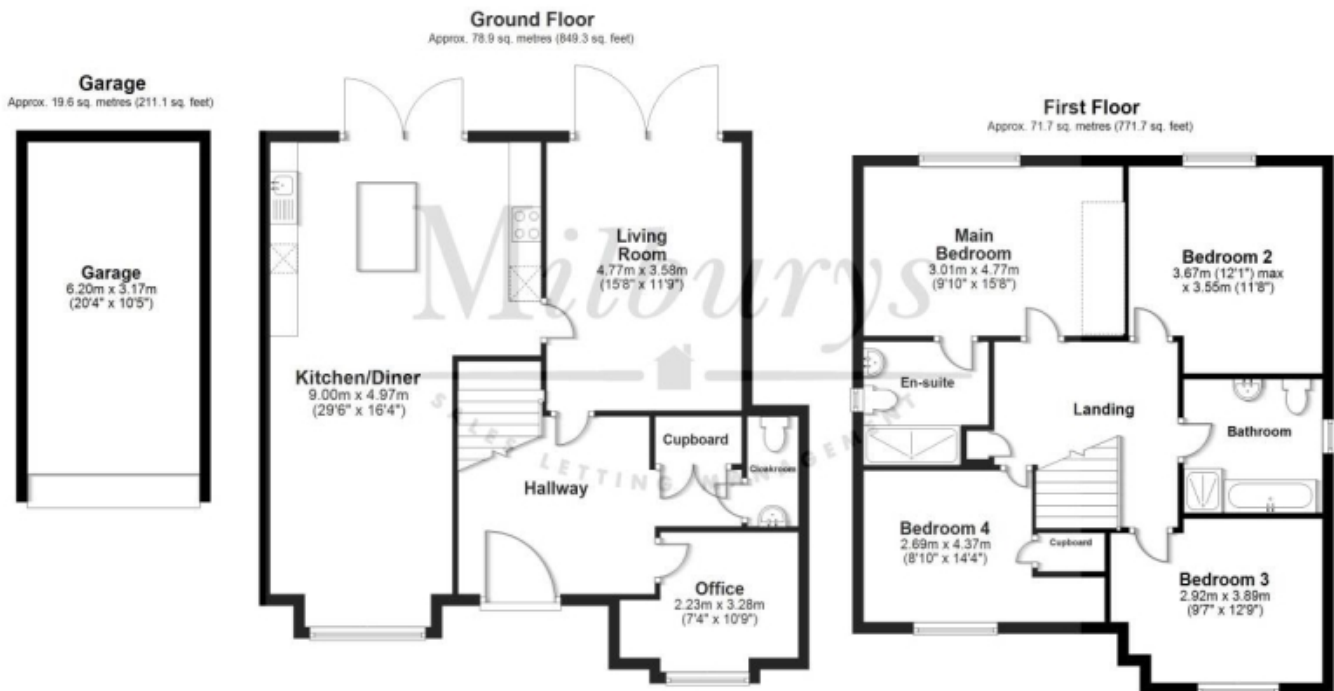


## Contact & Viewing

T: 01454 417336  
w: [www.milburys.co.uk](http://www.milburys.co.uk)



## Floorplan



## Additional Photos



## Important Notice

Milburys Estate Agents Ltd, their clients and any joint agents give notice that they have not tested any apparatus, equipment, fixtures, fittings, heating systems, drains or services and so cannot verify they are in working order or fit for their purpose. Interested parties are advised to obtain verification from their surveyor or relevant contractor. Statements pertaining to tenure are also given in good faith and should be verified by your legal representative. Digital images may, on occasion, include the use of a wide-angle lens. Please ask if you have any queries about any of the images shown, prior to viewing. Where provided, floor plans are shown purely as an indication of layout. They are not scale drawings and should not be treated as such. Complete listings and full details of all our properties (both for sale and to let) are available at [www.milburys.co.uk](http://www.milburys.co.uk)