



Flat / Apartment 'To Let'

£750 PCM

40 Long Street, Dursley



KEY FEATURES

Modern Finish - Top Floor Apartment - Open Plan Kitchen/Lounge with Built in Cupboard - Double Bedroom - Shower Room - Electric Heating - Unfurnished.

EPC - G - DEPOSIT £865.00

Description

A one bedroom top floor flat in a central Dursley position. It is situated a short walk to the High Street and Supermarket. This unfurnished apartment is in good condition throughout and includes an open plan kitchen/lounge with built in cupboard, one double bedroom and a shower room. It also has electric heating. Available from the start of August 2022 for six months to long term. No smokers. Council tax band A. (EPC-E)



Situation

The market town of Dursley sits on the edge of the Cotswold escarpment where it drops off towards the Severn Vale and the River Severn. Dursley's main watercourse is the River Cam and the town has attractive woodland and countryside surrounds. Major road networks are easily reached as it is approx 5.4 miles from the M4 junction 13 and 7.8 miles to Junction 14. Likewise Cam/Dursley has its own train link to Bristol. It has the very popular Rednock Secondary School, a selection of local shops, Swimming pool, and a Sainsbury's store.



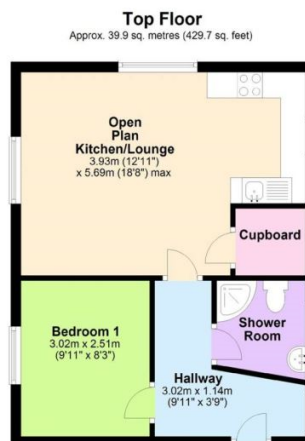
Local Authority & Council Tax

StroudDistrictCouncil
Council Tax Band - A



Contact & Viewing

T: 01454 417336
w: www.milburys.co.uk



Floorplan

Top Floor

Approx. 39.9 sq. metres (429.7 sq. feet)



Additional Photos

Important Notice

Milburys Estate Agents Ltd, their clients and any joint agents give notice that they have not tested any apparatus, equipment, fixtures, fittings, heating systems, drains or services and so cannot verify they are in working order or fit for their purpose. Interested parties are advised to obtain verification from their surveyor or relevant contractor. Statements pertaining to tenure are also given in good faith and should be verified by your legal representative. Digital images may, on occasion, include the use of a wide-angle lens. Please ask if you have any queries about any of the images shown, prior to viewing. Where provided, floor plans are shown purely as an indication of layout. They are not scale drawings and should not be treated as such. Complete listings and full details of all our properties (both for sale and to let) are available at www.milburys.co.uk