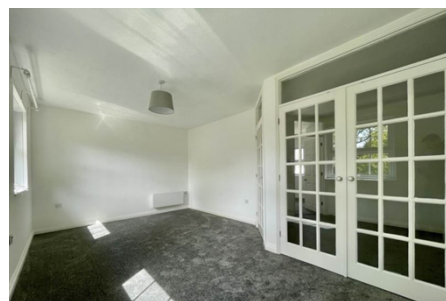


Flat / Apartment 'To Let'

£1,250 PCM

Rockwood House, Yate



KEY FEATURES

Second Floor Apartment - Unfurnished - Beautifully Presented - Entrance Hall with Storage Cupboard
Housing Water Tank - Lounge with Views over the Gardens - Modern Kitchen with Oven, Hob,
Fridge/Freezer, Washing Machine and Space for Dishwasher - Two Double Bedrooms - Bathroom with
Shower Over Bath - Double Glazing - Intercom Entry System - Electric Heating - One Allocated Parking
Space - Sizeable Communal Gardens and Parking.

EPC - D - DEPOSIT £1442.00

Description

This beautifully presented top floor apartment is situated in the sought after 'Rockwood House' development and has been fully renovated throughout, including a new kitchen, carpets and decor. Accommodation includes an entrance hall, lounge with views over the gardens, inner hall/dining area, modern kitchen with cooker, hob, washing machine and fridge/freezer, two double bedrooms and a bathroom with shower over bath. The property also comes with electric heating, an allocated parking space, communal parking and large, well tended communal gardens. Available now for six months to long term. No smokers. (EPC-E)



Situation

The town of Yate is located approximately 5.8 miles from the M4 Junction 18 and 11.3 miles from the centre of Bristol. It has a train station with main line connections, a refurbished leisure centre, retail park and restaurants and a large shopping centre which caters for all needs. From Yate there is easy access to Chipping Sodbury with its historic High Street dating back to the 12th Century. Chipping Sodbury offers a wide and eclectic range of shops and established businesses and more recently a Waitrose store has been built in the centre of the town. There is a selection of both Primary and Secondary Schooling in the Yate area of good reputation plus Chipping Sodbury offers country walks on a lovely common which neighbours the golf course and cricket club.



Local Authority & Council Tax

South Gloucestershire Council
Council Tax Band - C



Contact & Viewing

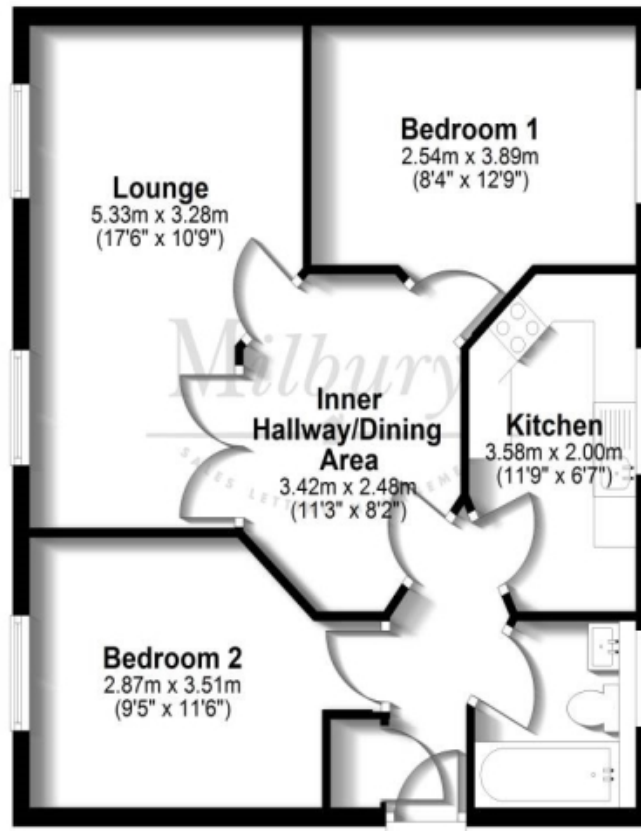
T: 01454 417336
w: www.milburys.co.uk



Floorplan

Ground Floor

Approx. 60.3 sq. metres (649.1 sq. feet)



Additional Photos



Important Notice

Milburys Estate Agents Ltd, their clients and any joint agents give notice that they have not tested any apparatus, equipment, fixtures, fittings, heating systems, drains or services and so cannot verify they are in working order or fit for their purpose. Interested parties are advised to obtain verification from their surveyor or relevant contractor. Statements pertaining to tenure are also given in good faith and should be verified by your legal representative. Digital images may, on occasion, include the use of a wide-angle lens. Please ask if you have any queries about any of the images shown, prior to viewing. Where provided, floor plans are shown purely as an indication of layout. They are not scale drawings and should not be treated as such. Complete listings and full details of all our properties (both for sale and to let) are available at www.milburys.co.uk