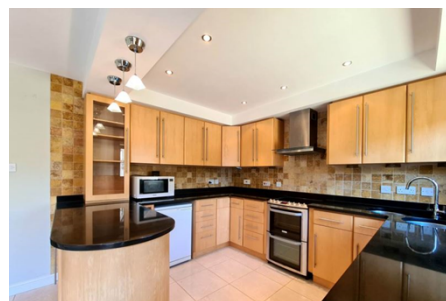
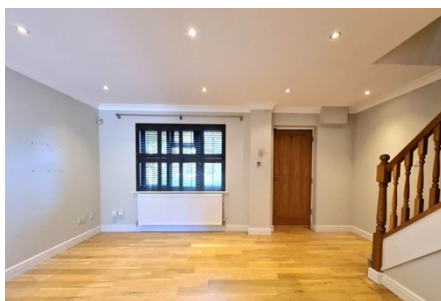




## Terraced House 'To Let'

£1,295 PCM

St Giles Barton, Hillesley



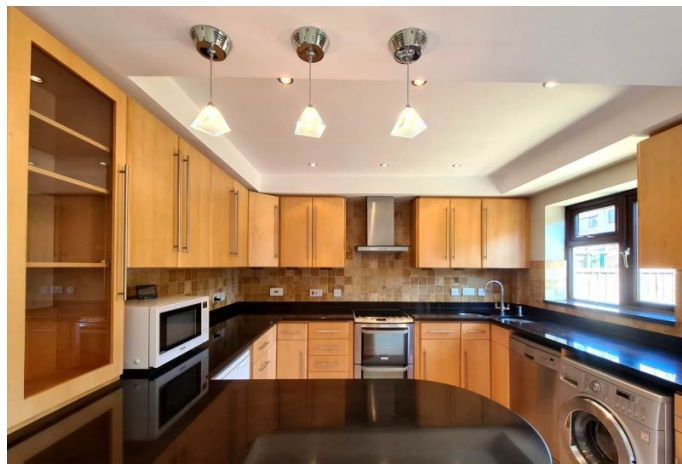
### KEY FEATURES

Terraced property - Sitting Room - Under Stairs Storage - Kitchen/Diner - Two Bedrooms - Bathroom - Low Maintenance Garden - Electric Heating - Garage - Allocated Parking

**EPC - E - DEPOSIT £1494.00**

## Description

This charming terraced home is nestled in the picturesque village of Hillesley, just a ten minute drive away from the historic market town of Wotton-Under-Edge. The property features a small garden to the front and entrance porch that opens into a welcoming sitting room complete with under stairs storage and wooden window shutters adding a touch of character. The rear of the home hosts a well laid out bright and airy kitchen/diner with patio door leading out to the low-maintenance garden. The first floor features two sizeable bedrooms, both offering integrated wardrobes for convenience and the bathroom is fitted with a shower over the bath, combining functionality with comfort. The property further benefits from a single garage and allocated parking for one car. Electric heating throughout. Available now for 6 months to long term (EPC E)



## Situation

Hillesley is a rural village on the western ridge of the Cotswolds about three miles south of Wotton Under Edge. The village's amenities include a primary school, St Giles church, a village hall and the Fleece Inn.



## Local Authority & Council Tax

StroudDistrictCouncil  
Council Tax Band - D



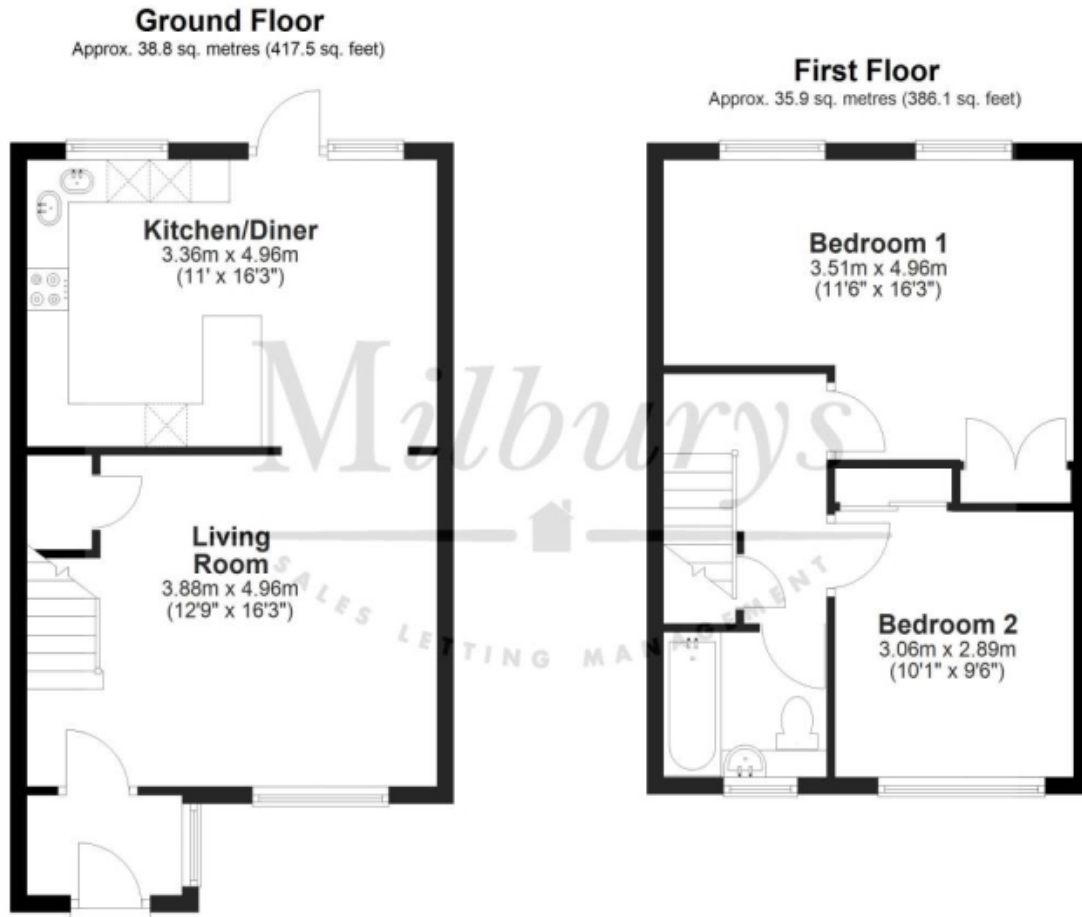
## Contact & Viewing

T: 01454 417336  
w: [www.milburys.co.uk](http://www.milburys.co.uk)





## Floorplan



## Additional Photos



## Important Notice

Milburys Estate Agents Ltd, their clients and any joint agents give notice that they have not tested any apparatus, equipment, fixtures, fittings, heating systems, drains or services and so cannot verify they are in working order or fit for their purpose. Interested parties are advised to obtain verification from their surveyor or relevant contractor. Statements pertaining to tenure are also given in good faith and should be verified by your legal representative. Digital images may, on occasion, include the use of a wide-angle lens. Please ask if you have any queries about any of the images shown, prior to viewing. Where provided, floor plans are shown purely as an indication of layout. They are not scale drawings and should not be treated as such. Complete listings and full details of all our properties (both for sale and to let) are available at [www.milburys.co.uk](http://www.milburys.co.uk)