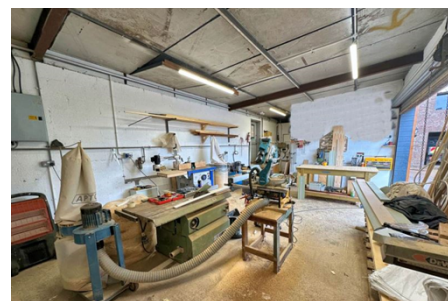
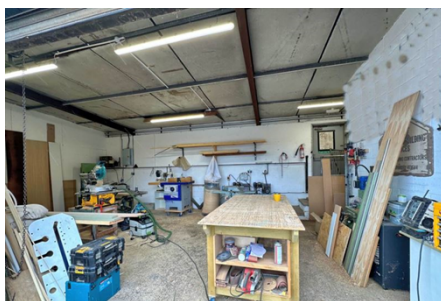
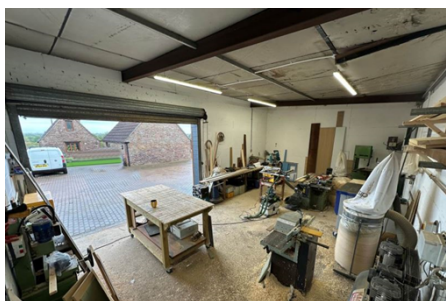




Commercial Property 'To Let'

£650 PCM

Latteridge Road, Earthcott Green



KEY FEATURES

Commercial Unit For Rent - Includes All Bills - Spacious Work Shop With Separate Kitchen & WC Facilities
- Available Now

EPC - [[EPCImages.EERImage.CurrentAsLetter]] - DEPOSIT £750.00

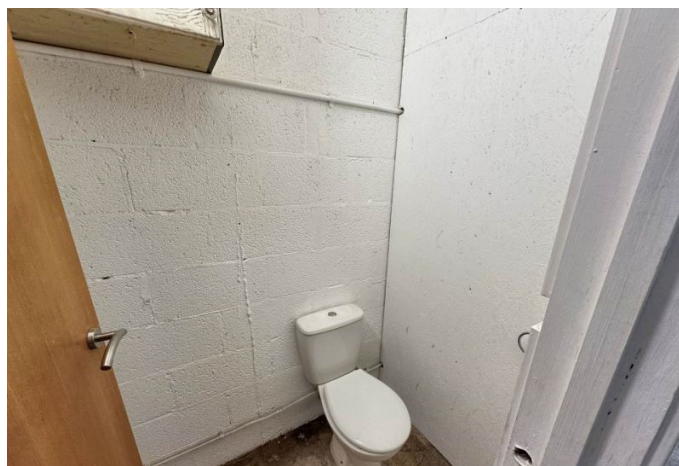
Description

A modern and light industrial unit ideally suited for a joiner workshop or a small aspiring businesses - The premises enjoys an open plan ground floor area with some equipment that can be used or removed depending on your requirements. Shared kitchen area and WC room. Outside there is a parking area to the front of the building. Ready for quick occupation! All bills included.



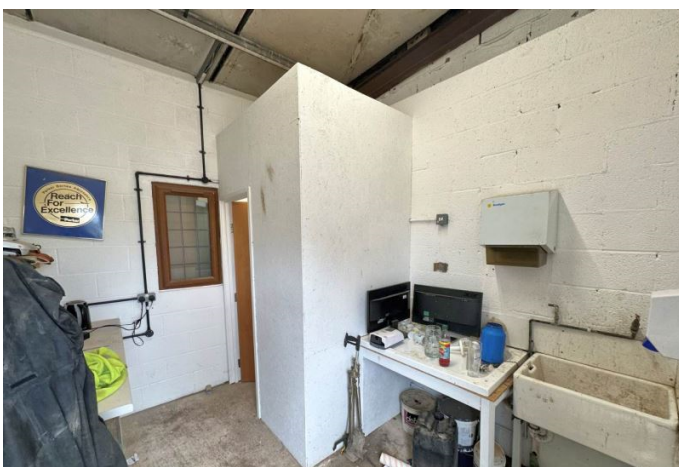
Situation

Latteridge is a hamlet in the countryside of South Gloucestershire, on the B4059 between the villages of Iron Acton and Rudgeway, with a large green and duck pond. It is situated 5.4 miles from the market town of Thornbury, 5.7 miles from Chipping Sodbury and 11 miles north-east of Bristol City Centre. The M4/M5 interchange is 6.4 miles away via the A38. Local railway stations are at Bristol Parkway (Paddington/South Wales) 5.8 miles away and at Yate (Temple Meads) 3.1 miles away. The Mall at Cribbs Causeway is 8.4 miles away via the A38 and the M5.



Local Authority & Council Tax

Council Tax Band -



Contact & Viewing

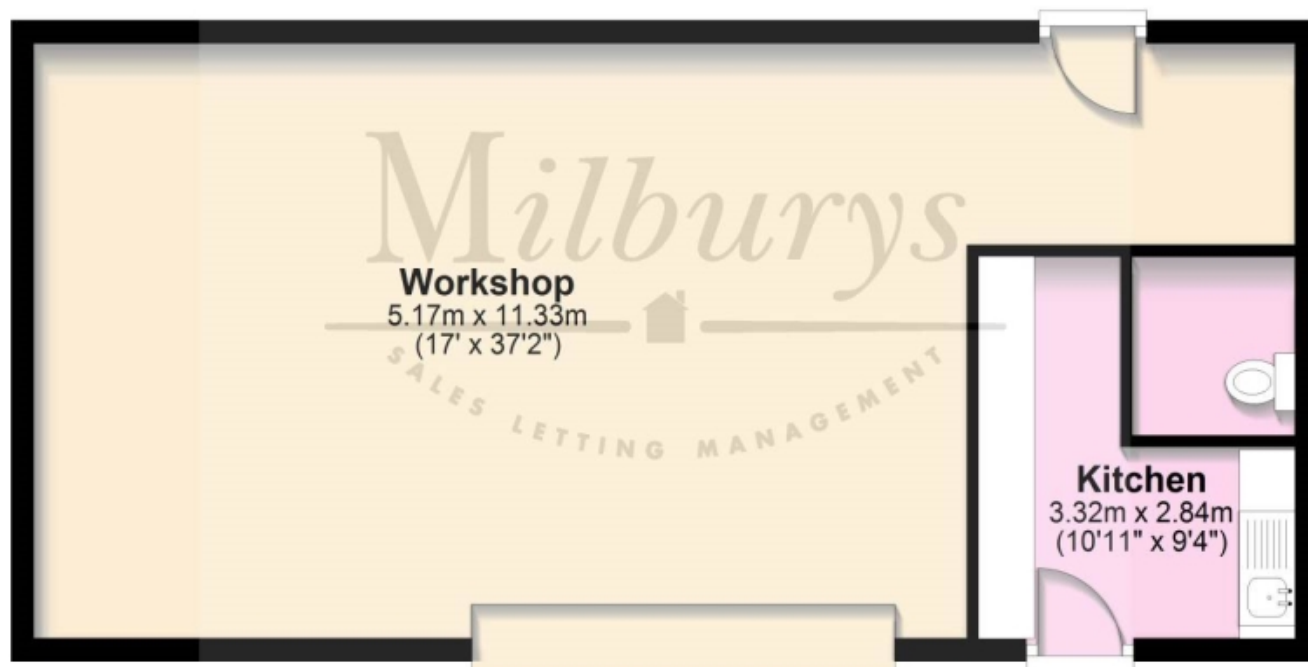
T: 01454 417336

w: www.milburys.co.uk



Ground Floor

Approx. 58.6 sq. metres (630.7 sq. feet)



Total area: approx. 58.6 sq. metres (630.7 sq. feet)

Additional Photos

Important Notice

Milburys Estate Agents Ltd, their clients and any joint agents give notice that they have not tested any apparatus, equipment, fixtures, fittings, heating systems, drains or services and so cannot verify they are in working order or fit for their purpose. Interested parties are advised to obtain verification from their surveyor or relevant contractor. Statements pertaining to tenure are also given in good faith and should be verified by your legal representative. Digital images may, on occasion, include the use of a wide-angle lens. Please ask if you have any queries about any of the images shown, prior to viewing. Where provided, floor plans are shown purely as an indication of layout. They are not scale drawings and should not be treated as such. Complete listings and full details of all our properties (both for sale and to let) are available at www.milburys.co.uk