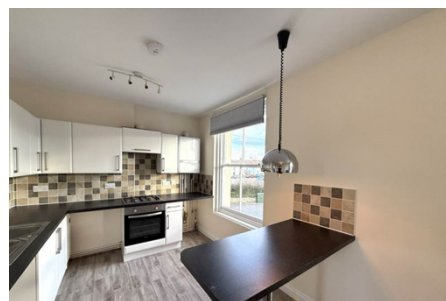




Flat / Apartment 'To Let'

£1,095 PCM

St John Street, Thornbury



#### KEY FEATURES

A Modern Two Bedroom Flat - Walking Distance From Thornbury Town Centre - Open Plan Lounge/Kitchen - Bathroom - Single Glazing Windows - Gas C/H - Unfurnished

**EPC - C - DEPOSIT £1263.00**

## Description

This well presented two bedroom top floor apartment is conveniently situated within walking distance of Thornbury Town Centre with its range of shops and amenities. The accommodation is offered on an unfurnished basis and comprises entrance hallway with storage cupboard, open plan lounge/kitchen with built in electric cooker, gas hob and plumbing for washing machine. The master bedroom is a double and bedroom two is a single with the addition of a built in storage area. The bathroom comprises WC, wash hand basin and shower over bath. Further benefits include gas c/h and allocated parking for one car. Would ideally suit a single person or couple. Available now.



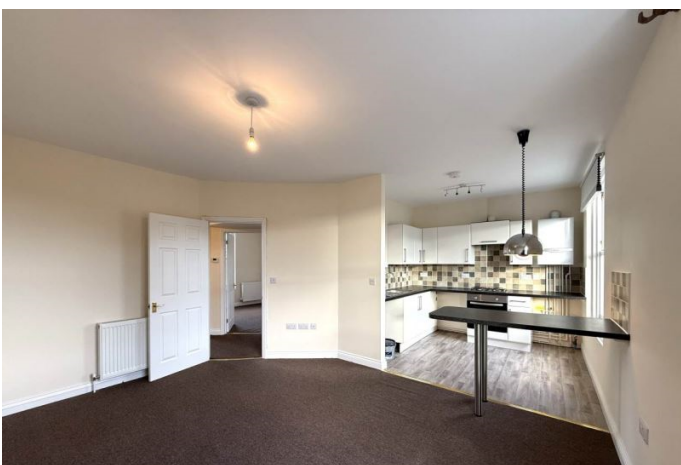
## Situation

Thornbury is a thriving market town to the north of the City of Bristol and the M4/M5 interchange, with excellent commuting links via the motorway network and by rail from Bristol Parkway Station (Paddington/South Wales). The High Street offers a wide variety of shops, cafes, pubs and restaurants. Other facilities include the leisure centre, golf course and library, plus open community spaces, parks and sports grounds/clubs. The town is blessed with a number of primary and junior schools, plus The Castle secondary school ([www.castle.gloucs.sch.uk](http://www.castle.gloucs.sch.uk)) which is situated on the edge of open countryside close to Thornbury's Tudor Castle, now a luxury hotel.



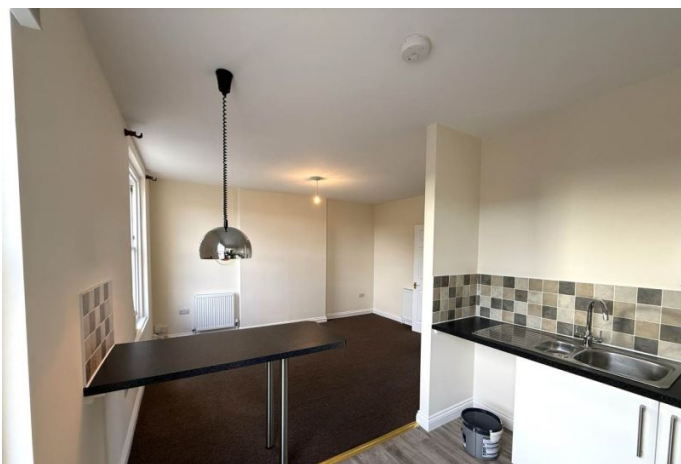
## Local Authority & Council Tax

South Gloucestershire Council  
Council Tax Band - A

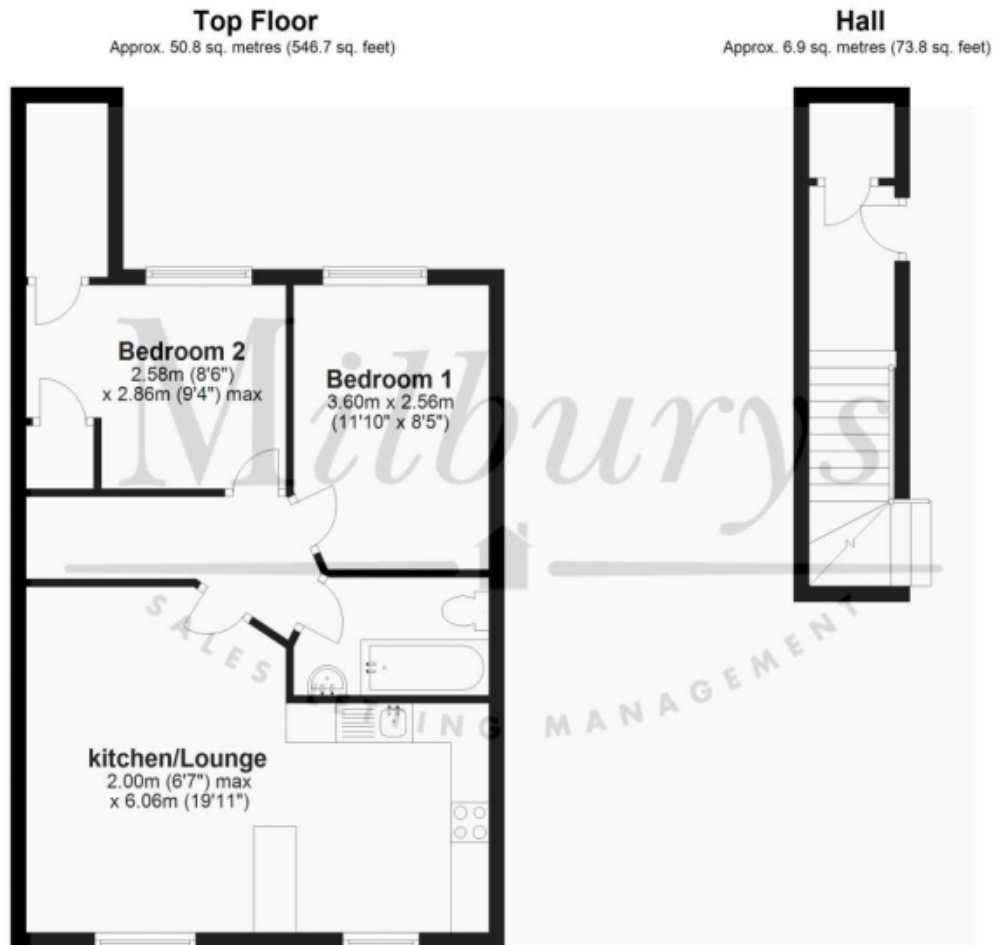


## Contact & Viewing

T: 01454 417336  
w: [www.milburys.co.uk](http://www.milburys.co.uk)



## Floorplan



## Additional Photos



## Important Notice

Milburys Estate Agents Ltd, their clients and any joint agents give notice that they have not tested any apparatus, equipment, fixtures, fittings, heating systems, drains or services and so cannot verify they are in working order or fit for their purpose. Interested parties are advised to obtain verification from their surveyor or relevant contractor. Statements pertaining to tenure are also given in good faith and should be verified by your legal representative. Digital images may, on occasion, include the use of a wide-angle lens. Please ask if you have any queries about any of the images shown, prior to viewing. Where provided, floor plans are shown purely as an indication of layout. They are not scale drawings and should not be treated as such. Complete listings and full details of all our properties (both for sale and to let) are available at [www.milburys.co.uk](http://www.milburys.co.uk)