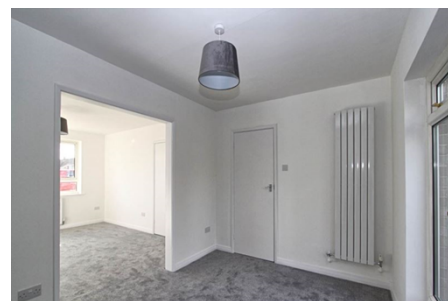




Semi Detached House 'To Let'

£1,525 PCM

Dryleaze, Wotton-under-Edge



KEY FEATURES

Semi-Detached Home - Fully Refurbished - Popular Cul-de-Sac - Short Walk to the High Street - Entrance Hall - Lounge - Dining Room - Kitchen with Cooker - Three Bedrooms - En-Suite Shower Room - Bathroom - Double Glazing - Gas Central Heating - Single Garage - Off Road Parking - Good Size Rear Garden - Unfurnished.

EPC - C - DEPOSIT £1759.00

Description

This three-bedroom semi-detached house is situated in a favorable position in a popular cul-de-sac. It has an elevated position, with lovely views to the front, and is a short walk to the High Street. The property has been fully renovated throughout, to include bright and fresh decor and new carpets/floor coverings. Accommodation includes an entrance hall leading to a lounge, dining room and fully fitted modern kitchen with cooker. Upstairs there are three bedrooms (two with built-in wardrobes), an en-suite shower room and a family bathroom. Additional benefits include off street parking to the front, single garage, a good size rear garden, double glazing and gas central heating. Available now for six months to long term. No smokers. (EPC-C)



Situation

Situated on the Cotswold Way, this charming character Market Town has an eclectic mix of local shops and businesses on its vibrant High Street. Golf courses, beautiful surrounding countryside plus access to Tetbury (approx 10.1 miles), Cirencester, Bristol and the M5 (Junction 14 is approx 5.1 miles) make an ideal location for families, commuters and outdoor enthusiasts. The nearby Katharine Lady Berkeley's Secondary School (approx 0.7 miles) is an important element in the town plus there are two infants' schools in Wotton-under-Edge.



Local Authority & Council Tax

StroudDistrictCouncil
Council Tax Band - D



Contact & Viewing

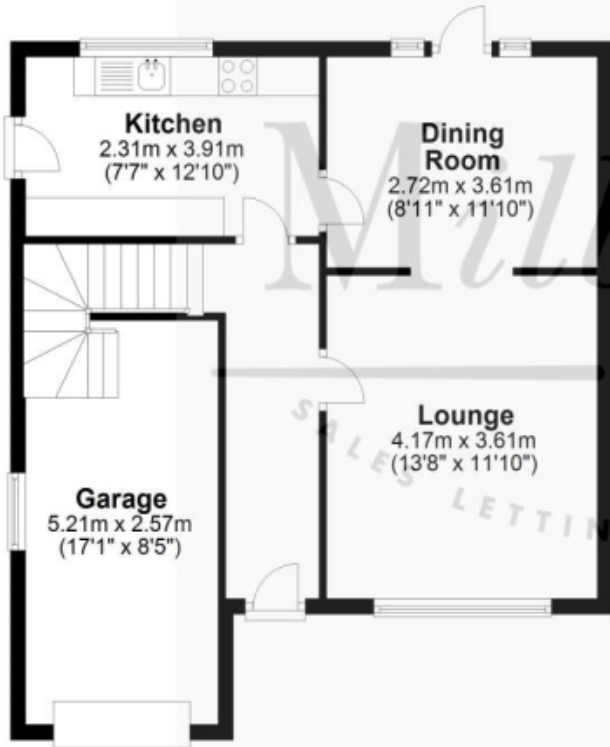
T: 01454 417336
w: www.milburys.co.uk



Floorplan

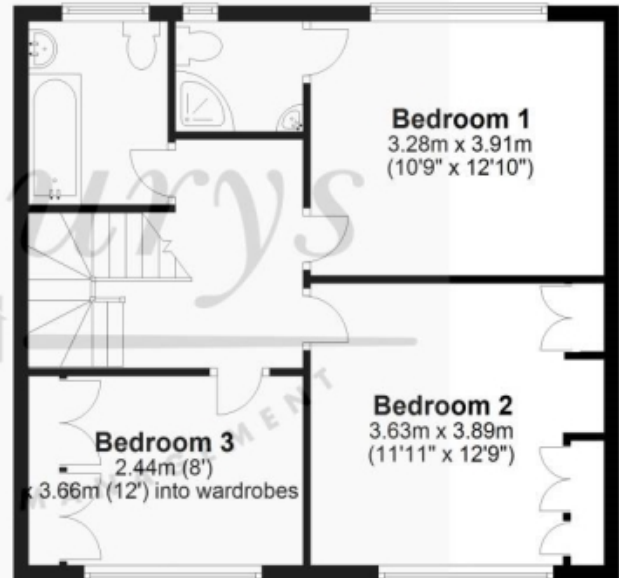
Ground Floor

Approx. 57.3 sq. metres (617.3 sq. feet)



First Floor

Approx. 53.5 sq. metres (576.1 sq. feet)



Additional Photos



Important Notice

Milburys Estate Agents Ltd, their clients and any joint agents give notice that they have not tested any apparatus, equipment, fixtures, fittings, heating systems, drains or services and so cannot verify they are in working order or fit for their purpose. Interested parties are advised to obtain verification from their surveyor or relevant contractor. Statements pertaining to tenure are also given in good faith and should be verified by your legal representative. Digital images may, on occasion, include the use of a wide-angle lens. Please ask if you have any queries about any of the images shown, prior to viewing. Where provided, floor plans are shown purely as an indication of layout. They are not scale drawings and should not be treated as such. Complete listings and full details of all our properties (both for sale and to let) are available at www.milburys.co.uk