



Semi Detached House 'To Let'

£1,500 PCM

The Meads, Burton



KEY FEATURES

Semi-Detached Home – Popular Semi-Rural Village Location – Walking Distance to Burton Farm Shop and The Old House at Home Public House – Entrance Hall – Lounge – Second Reception Room – Kitchen with Oven – Three Bedrooms – Family Bathroom – Large front and Rear Gardens – Double Glazing – Electric Heating – Unfurnished.

EPC - E - DEPOSIT £1730.00

Description

Situated in the picturesque village of Burton is this fully renovated semi-detached home. It is within walking distance to the local farm shop, and the much revered 'The Old House at Home' public house. It is also within convenient distance to Castle Combe and Chippenham. The property has an open communal parking area to the front and both good sized front and rear gardens. Accommodation downstairs includes an entrance hall, lounge, second reception room and a kitchen with cooker. Upstairs there are three bedrooms and the family bathroom. Additionally, the property has electric heating and double glazing. Available now for six months to long term. No smokers (EPC-E)



Situation

Burton is a picturesque Cotswold Village approximately 6.8 miles from Chipping Sodbury and 8.7 miles from Chippenham. The village enjoys some beautiful surrounding countryside and is ideal for commuters with easy access to local villages, Chippenham, Bath and Bristol via junctions 17 and 18 of the M4. Burton has a very popular Public House with a great reputation and is an easy commutable distance from the Acton Turville Trinity School, a village infant school which has been highly invested in and rebuilt. Burton is also a feeder village to Sheldon and Hardenhuish Schools.



Local Authority & Council Tax

WiltshireCouncil
Council Tax Band - B

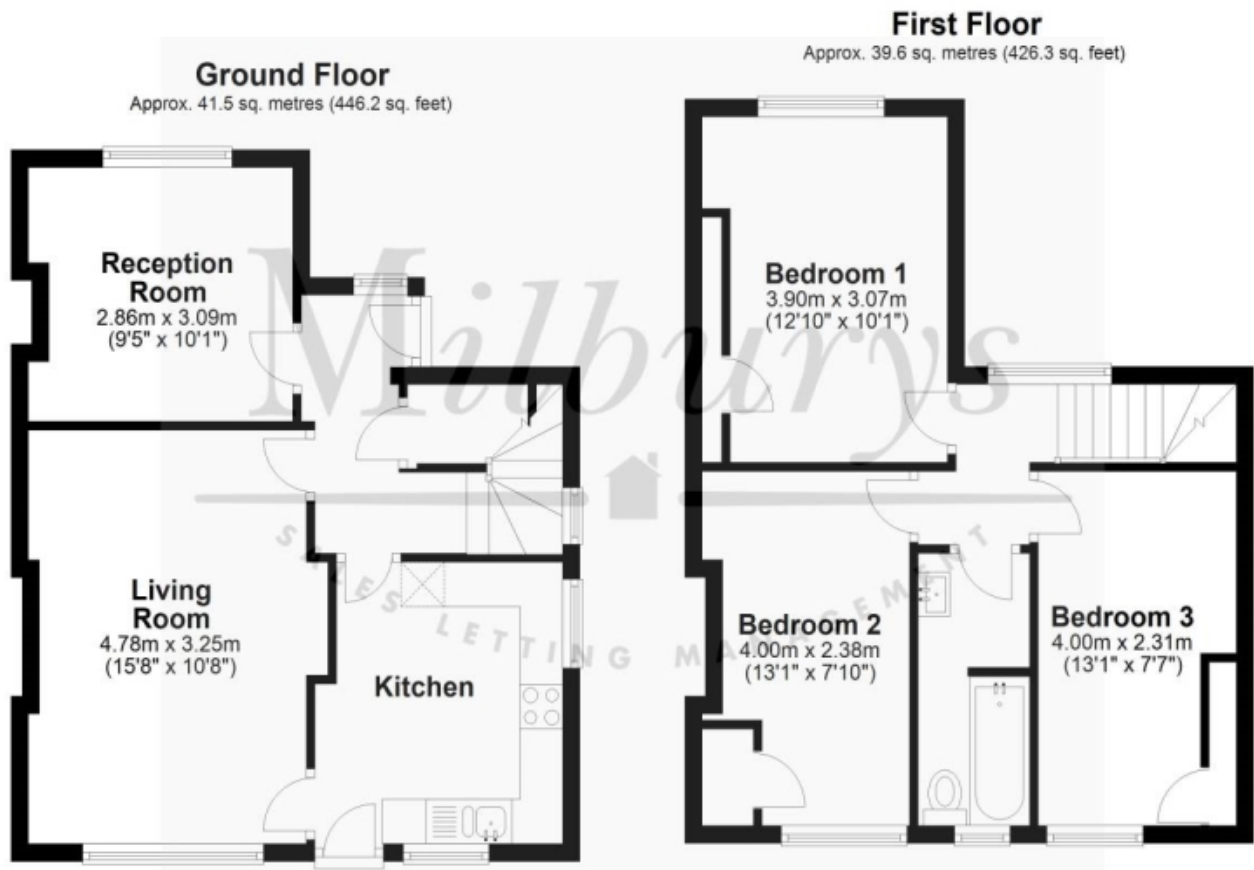


Contact & Viewing

T: 01454 417336
w: www.milburys.co.uk



Floorplan



Additional Photos



Important Notice

Milburys Estate Agents Ltd, their clients and any joint agents give notice that they have not tested any apparatus, equipment, fixtures, fittings, heating systems, drains or services and so cannot verify they are in working order or fit for their purpose. Interested parties are advised to obtain verification from their surveyor or relevant contractor. Statements pertaining to tenure are also given in good faith and should be verified by your legal representative. Digital images may, on occasion, include the use of a wide-angle lens. Please ask if you have any queries about any of the images shown, prior to viewing. Where provided, floor plans are shown purely as an indication of layout. They are not scale drawings and should not be treated as such. Complete listings and full details of all our properties (both for sale and to let) are available at www.milburys.co.uk