



Flat / Apartment 'To Let'
£615 PCM
27 Long Street, Long Street



KEY FEATURES

EPC - [[EPCImages.EERImage.CurrentAsLetter]] - DEPOSIT £709.00

Description

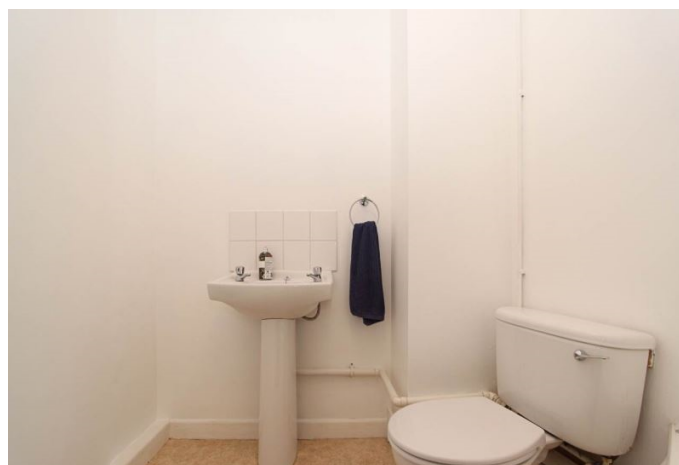


Situation



Local Authority & Council Tax

StroudDistrictCouncil
Council Tax Band - A



Contact & Viewing

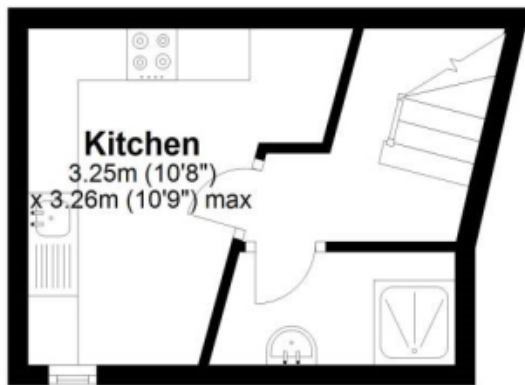
T: 01454 417336
w: www.milburys.co.uk



Floorplan

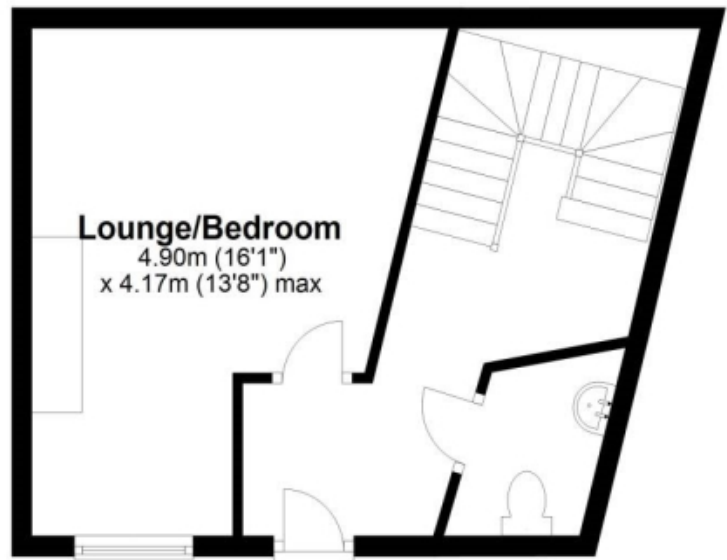
Basement

Approx. 14.4 sq. metres (154.9 sq. feet)

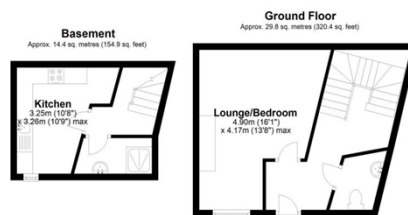


Ground Floor

Approx. 29.8 sq. metres (320.4 sq. feet)



Additional Photos



Important Notice

Milburys Estate Agents Ltd, their clients and any joint agents give notice that they have not tested any apparatus, equipment, fixtures, fittings, heating systems, drains or services and so cannot verify they are in working order or fit for their purpose. Interested parties are advised to obtain verification from their surveyor or relevant contractor. Statements pertaining to tenure are also given in good faith and should be verified by your legal representative. Digital images may, on occasion, include the use of a wide-angle lens. Please ask if you have any queries about any of the images shown, prior to viewing. Where provided, floor plans are shown purely as an indication of layout. They are not scale drawings and should not be treated as such. Complete listings and full details of all our properties (both for sale and to let) are available at www.milburys.co.uk