



House 'To Let'

£1,295 PCM

Fern Grove, Bradley Stoke



KEY FEATURES

Terraced House - Close to Local Amenities - Lounge - Kitchen - Two Bedrooms - Bathroom With Shower Over Bath - Fully Enclosed Rear Garden - Double Glazing - Off Street Parking for two Cars - Gas Central Heating - Unfurnished.

EPC - D - DEPOSIT £1494.00

Description

We are pleased to offer this well presented two double bedroom unfurnished terraced house. Downstairs accommodation consists of a hallway, lounge with storage cupboard and kitchen with gas hob and electric cooker. Upstairs there are two bedrooms (master with fitted wardrobe) and a bathroom with shower over bath. Outside you have off street parking for two vehicles and a fully enclosed rear garden with patio area. This property further benefits from gas central heating and double glazing. Available 1st September for six months to long term. Non smokers only.



Situation

Bradley Stoke is situated on the north side of the city of Bristol with excellent access to the M4/M5 motorways, Parkway Railway Station and only 6 miles into the city centre. Named after the local Bradley Brook and Stoke Brook streams, the town was planned in the 1970s and building began in 1987. There are six primary schools, a secondary school, Bradley Stoke Community School, leisure centre with a swimming pool, a library and a doctor and dentist surgery. The town centre, Willow Brook Centre, opened in 2008 featuring around 18 shops.



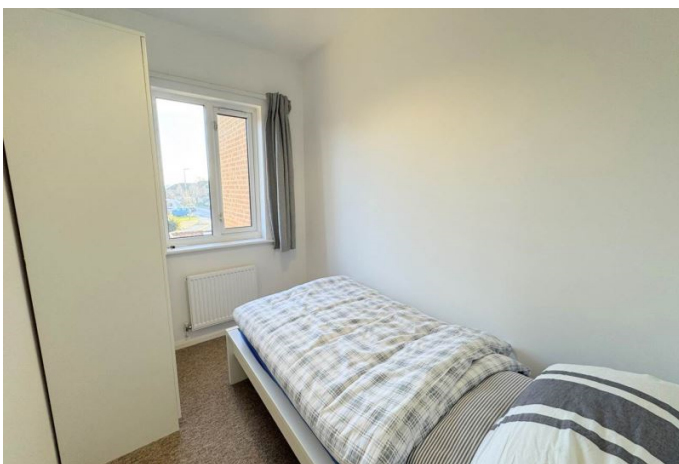
Local Authority & Council Tax

South Gloucestershire Council
Council Tax Band - B

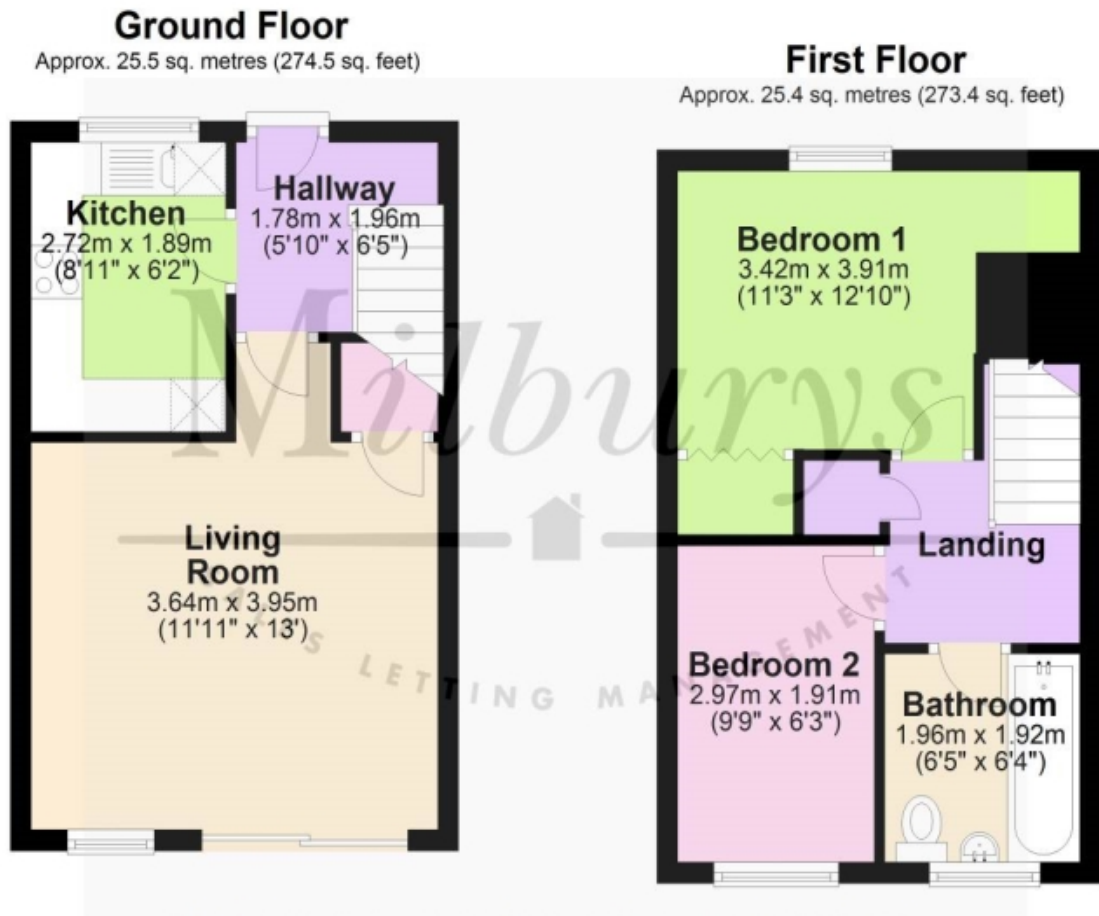


Contact & Viewing

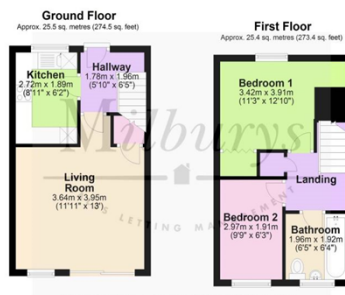
T: 01454 417336
w: www.milburys.co.uk



Floorplan



Additional Photos



Important Notice

Milburys Estate Agents Ltd, their clients and any joint agents give notice that they have not tested any apparatus, equipment, fixtures, fittings, heating systems, drains or services and so cannot verify they are in working order or fit for their purpose. Interested parties are advised to obtain verification from their surveyor or relevant contractor. Statements pertaining to tenure are also given in good faith and should be verified by your legal representative. Digital images may, on occasion, include the use of a wide-angle lens. Please ask if you have any queries about any of the images shown, prior to viewing. Where provided, floor plans are shown purely as an indication of layout. They are not scale drawings and should not be treated as such. Complete listings and full details of all our properties (both for sale and to let) are available at www.milburys.co.uk