



House 'To Let'

£1,550 PCM

Ellicks Close, Bradley Stoke



**KEY FEATURES**

Three Bedroom House - Semi-Detached - Lounge - Kitchen/Dining Room - Double Glazing - Gas C/H - Enclosed Rear Garden - Single Garage - Unfurnished.

**EPC - C - DEPOSIT £1788.00**

## Description

This well presented three bedroom semi-detached house is offered on an unfurnished basis and comprises lounge, kitchen/dining room with electric cooker and hob, two double bedrooms and one single, bathroom with shower over bath. Outside there is an open plan lawn to front, fully enclosed garden to rear and a single garage with off road parking available. Further benefits include gas c/h and double glazing. Available 19th February 2025 for six months to long term. Non smokers only. Highly recommended.



## Situation

Bradley Stoke is situated on the north side of the city of Bristol with excellent access to the M4/M5 motorways, Parkway Railway Station and only 6 miles into the city centre. Named after the local Bradley Brook and Stoke Brook streams, the town was planned in the 1970s and building began in 1987. There are six primary schools, a secondary school, Bradley Stoke Community School, leisure centre with a swimming pool, a library and a doctor and dentist surgery. The town centre, Willow Brook Centre, opened in 2008 featuring around 18 shops.



## Local Authority & Council Tax

South Gloucestershire Council  
Council Tax Band - C

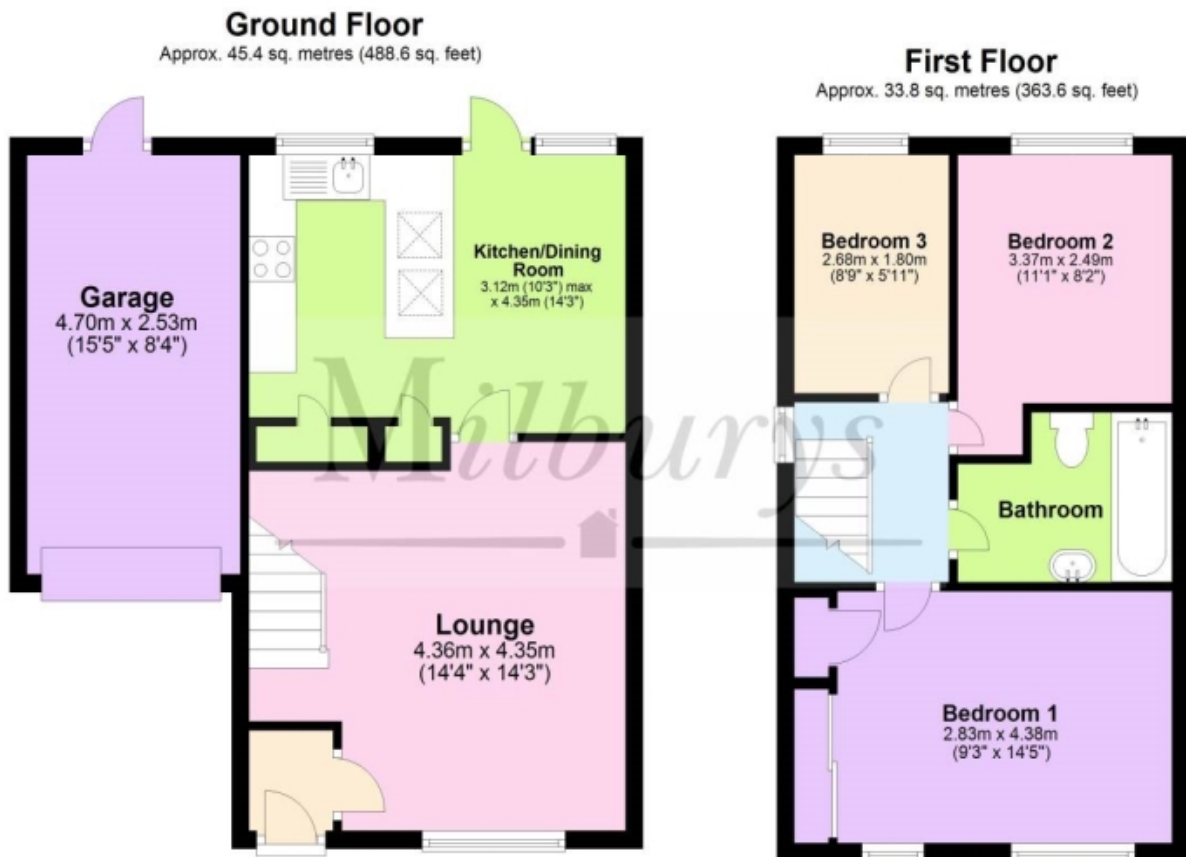


## Contact & Viewing

T: 01454 417336  
w: [www.milburys.co.uk](http://www.milburys.co.uk)



## Floorplan



## Additional Photos



## Important Notice

Milburys Estate Agents Ltd, their clients and any joint agents give notice that they have not tested any apparatus, equipment, fixtures, fittings, heating systems, drains or services and so cannot verify they are in working order or fit for their purpose. Interested parties are advised to obtain verification from their surveyor or relevant contractor. Statements pertaining to tenure are also given in good faith and should be verified by your legal representative. Digital images may, on occasion, include the use of a wide-angle lens. Please ask if you have any queries about any of the images shown, prior to viewing. Where provided, floor plans are shown purely as an indication of layout. They are not scale drawings and should not be treated as such. Complete listings and full details of all our properties (both for sale and to let) are available at [www.milburys.co.uk](http://www.milburys.co.uk)