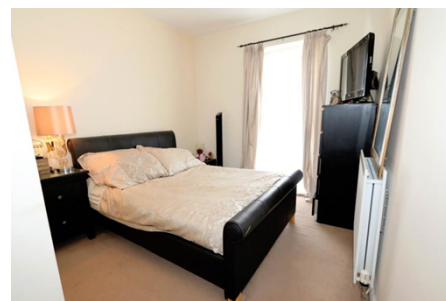




Flat / Apartment 'To Let'

£1,550 PCM

Long Down Avenue, Stoke Gifford



KEY FEATURES

Modern - Two Bedroom Apartment - Top Floor - Double Glazing - Air Source Heat Pump - Allocated Parking - Secure Bike Storage Area - Unfurnished.

EPC - C - DEPOSIT £1788.00

Description

This modern two bedroom top floor apartment is situated on the popular Cheswick Village development, close to the MOD, local Business Parks and Parkway Station. The property is offered on an unfurnished basis and includes an open plan kitchen/lounge/dining area, two double sized bedrooms with an en-suite shower room to the master, additional bathroom with shower, double glazing, air source heat pump and off road allocated parking. Would ideally suit a professional couple, no pets, children or smokers. Available 21st November for six months to long term.



Situation

Stoke Gifford is a suburb of north Bristol that is situated in South Gloucestershire and is home to Bristol Parkway railway station. It is situated approximately 2.8 miles from junction 19 of the M4 giving commuter's access to Bristol, the South West, Gloucester, Swindon and the M48 to Wales. Cribbs Causeway Retail Park is approximately 3.4 miles away with its excellent range of shopping, restaurants and entertainment facilities.



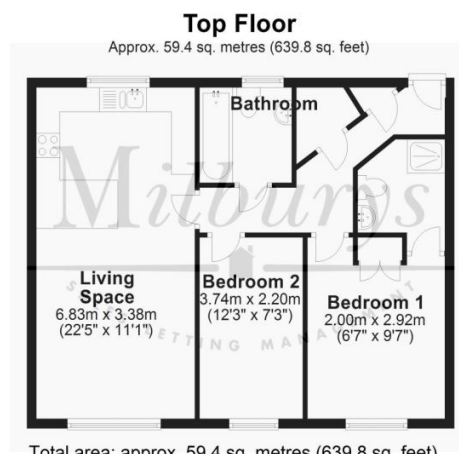
Local Authority & Council Tax

South Gloucestershire Council
Council Tax Band - B



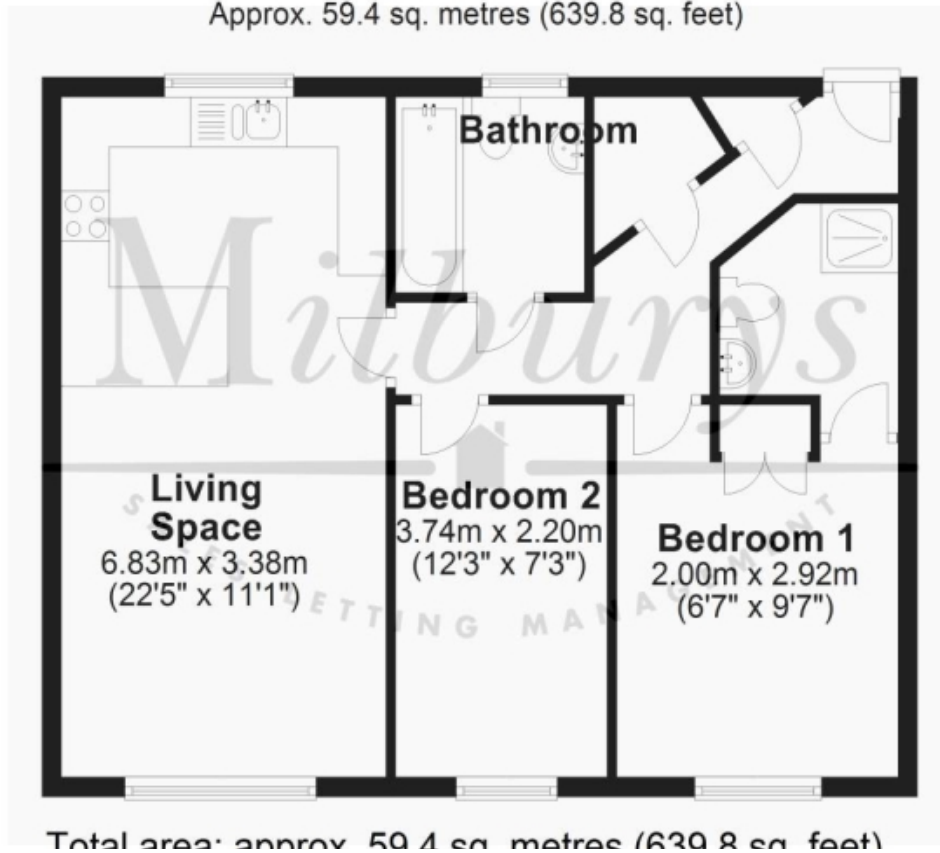
Contact & Viewing

T: 01454 417336
w: www.milburys.co.uk



Top Floor

Approx. 59.4 sq. metres (639.8 sq. feet)



Additional Photos

Important Notice

Milburys Estate Agents Ltd, their clients and any joint agents give notice that they have not tested any apparatus, equipment, fixtures, fittings, heating systems, drains or services and so cannot verify they are in working order or fit for their purpose. Interested parties are advised to obtain verification from their surveyor or relevant contractor. Statements pertaining to tenure are also given in good faith and should be verified by your legal representative. Digital images may, on occasion, include the use of a wide-angle lens. Please ask if you have any queries about any of the images shown, prior to viewing. Where provided, floor plans are shown purely as an indication of layout. They are not scale drawings and should not be treated as such. Complete listings and full details of all our properties (both for sale and to let) are available at www.milburys.co.uk