



Flat / Apartment 'To Let'

£1,150 PCM

Leaze Close, Thornbury



#### KEY FEATURES

Well Presented - Purpose Built Apartment - Two Bedrooms - First Floor - Gas Central Heating - Double Glazing - Bathroom With Shower Over Bath - Kitchen With White Goods - Single Garage - Unfurnished.

**EPC - C - DEPOSIT £1326.00**

## Description

A well presented two bedroom first floor apartment situated in the heart of Thornbury and within easy reach of the town centre and amenities. The accommodation is offered on an unfurnished basis and comprises two bedrooms (one with built in wardrobe), kitchen with white goods, lounge and bathroom with shower over bath. Further benefits include gas central heating and double glazing and a single garage. Would ideally suit a professional single person or couple. Available mid January 2025. No pets or smokers.



## Situation

Thornbury is a thriving market town where the High Street offers a variety of shops, cafes, pubs and restaurants. Facilities include the Leisure Centre, Golf Course and Library. The town is blessed with a number of primary and junior schools, all feeding into The Castle secondary school ([www.castle.gloucs.sch.uk](http://www.castle.gloucs.sch.uk)) which is situated on the edge of open countryside close to Thornbury Castle.



## Local Authority & Council Tax

South Gloucestershire Council  
Council Tax Band - B



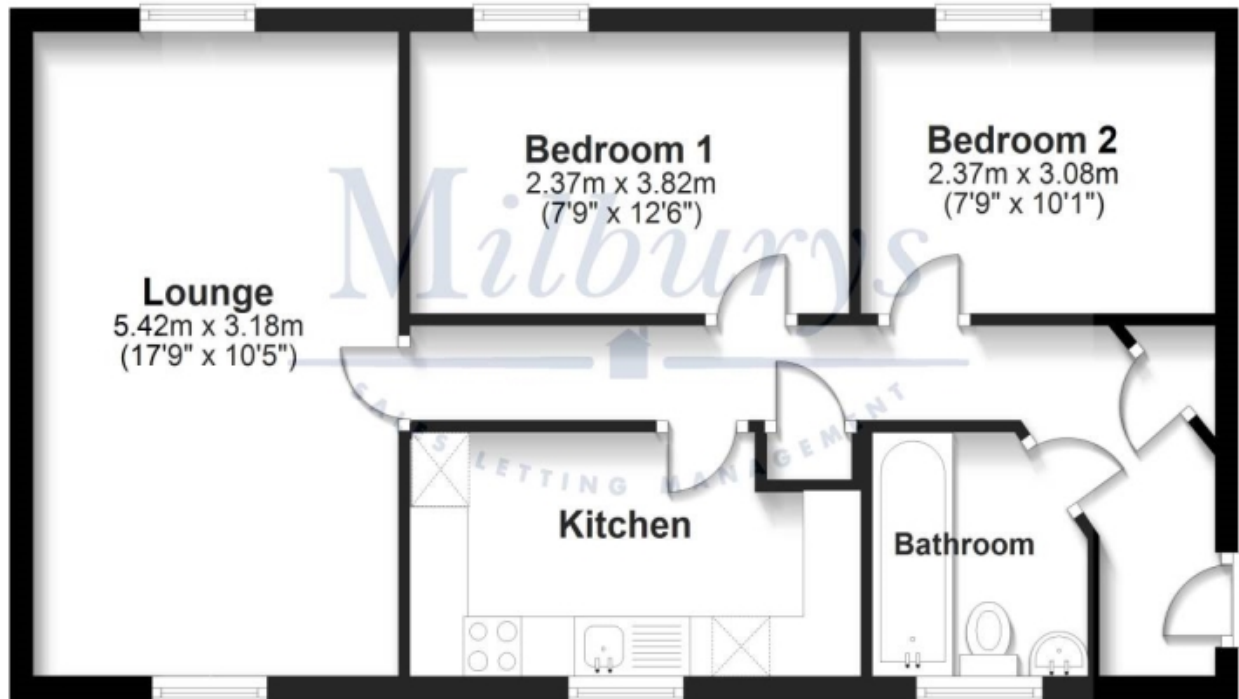
## Contact & Viewing

T: 01454 417336  
w: [www.milburys.co.uk](http://www.milburys.co.uk)



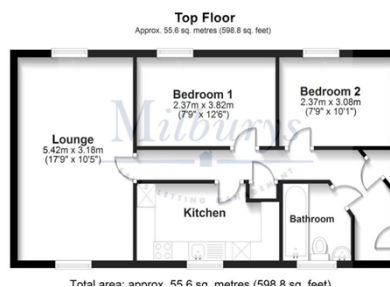
## Top Floor

Approx. 55.6 sq. metres (598.8 sq. feet)



Total area: approx 55.6 sq. metres (598.8 sq. feet)

## Additional Photos



## Important Notice

Milburys Estate Agents Ltd, their clients and any joint agents give notice that they have not tested any apparatus, equipment, fixtures, fittings, heating systems, drains or services and so cannot verify they are in working order or fit for their purpose. Interested parties are advised to obtain verification from their surveyor or relevant contractor. Statements pertaining to tenure are also given in good faith and should be verified by your legal representative. Digital images may, on occasion, include the use of a wide-angle lens. Please ask if you have any queries about any of the images shown, prior to viewing. Where provided, floor plans are shown purely as an indication of layout. They are not scale drawings and should not be treated as such. Complete listings and full details of all our properties (both for sale and to let) are available at [www.milburys.co.uk](http://www.milburys.co.uk)