



Cottage 'To Let'
£1,600 PCM
High Street, Chipping Sodbury



KEY FEATURES

Charming 1800s Character Cottage - Central High Street Location - End Terrace Property - Stone Built Construction - Ideal for Shops and Amenities - Welcoming Hallway - Two Reception Rooms - Modern Fitted Kitchen - Downstairs Bathroom - Three Bedrooms - Upstairs WC - Period Fireplaces (Not Permitted for Use) - Southerly Facing Garden - Secure Stone Built Workshop/Store with Electric Lights and Power - Gas Central Heating - On Road Parking - Unfurnished.

EPC - D - DEPOSIT £1846.00

Description

This character 1800s stone built cottage looks directly over the attractive High Street, enabling easy access to the local shops, schools and amenities. It has been extended over the years and recently upgraded so now offers well presented, comfortable size accommodation. You enter the property via a welcoming hallway which leads past two reception rooms and into the modern kitchen. From the rear lobby a door leads onto a private rear patio which stretches onto a long garden. The Southerly facing garden is pretty and very secure with high boundary walls plus has a dry, stone built workshop/store with power and lights. Upstairs, the property has three bedrooms and a WC, whilst the modern family bathroom is situated downstairs. Available from the 22nd of August 2025 for six months to long term. No smokers. (EPC-D)



Situation

The historic market town of Chipping Sodbury sits on the edge of the Cotswolds and has excellent road links to the A46, the M4 (Junction 18 is approx 4.9 miles away), M5 (Junction 14 is approx. 8.8 miles away), Bristol and Bath. The nearby Yate train station (approx 1.9 miles away) also provides good transport links for commuters to Bristol. The historic High Street dates back to the 12th Century and offers a wide and eclectic range of shops and established businesses which support the town and attract visitors. There is a selection of both Primary and Secondary Schooling in the general area of good reputation. Chipping Sodbury has many nearby country walks, a lovely common, golf course, cricket club, rugby club, tennis club and the Waitrose store which is a huge attribute to the town.



Local Authority & Council Tax

South Gloucestershire Council
Council Tax Band - C



Contact & Viewing

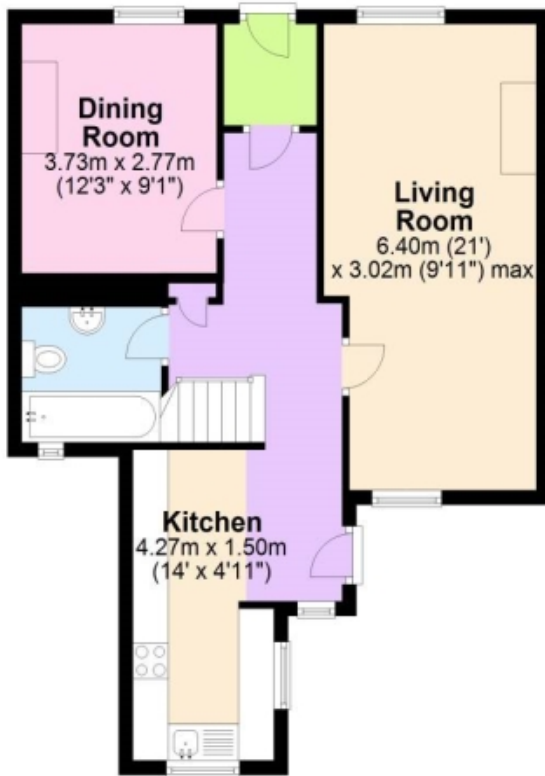
T: 01454 417336
w: www.milburys.co.uk



Floorplan

Ground Floor

Approx. 54.5 sq. metres (586.4 sq. feet)



First Floor

Approx. 42.7 sq. metres (459.7 sq. feet)



Additional Photos



Important Notice

Milburys Estate Agents Ltd, their clients and any joint agents give notice that they have not tested any apparatus, equipment, fixtures, fittings, heating systems, drains or services and so cannot verify they are in working order or fit for their purpose. Interested parties are advised to obtain verification from their surveyor or relevant contractor. Statements pertaining to tenure are also given in good faith and should be verified by your legal representative. Digital images may, on occasion, include the use of a wide-angle lens. Please ask if you have any queries about any of the images shown, prior to viewing. Where provided, floor plans are shown purely as an indication of layout. They are not scale drawings and should not be treated as such. Complete listings and full details of all our properties (both for sale and to let) are available at www.milburys.co.uk