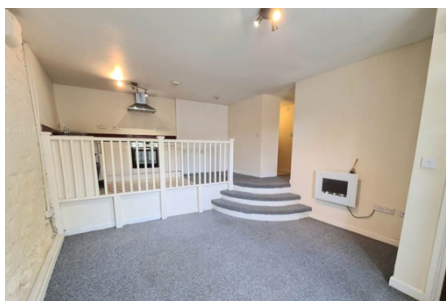




Flat / Apartment 'To Let'
£750 PCM
Long Street, Dursley



KEY FEATURES

Modern Decor - Ground Floor Flat - Own Private Entrance - One Double Bedroom - Modern Kitchen -
Lounge/Diner - Bathroom - Electric Heating.
EPC - C - DEPOSIT £865.00

Description

This refurbished ground floor flat is located in the heart of Dursley, within walking distance of the local amenities. It has its own private entrance door and modern electric heating. Unfurnished accommodation comprises of one double bedroom, kitchen, lounge/dining room, and bathroom. The property has pleasant modern décor, and the exposed wall in the lounge/diner area is a particular feature as well as the elevated, modern kitchen area. Available now for twelve months to long term. No smokers. (EPC-C)



Situation

The market town of Dursley sits on the edge of the Cotswold escarpment where it drops off towards the Severn Vale and the River Severn. Dursley's main watercourse is the River Cam and the town has attractive woodland and countryside surrounds. Major road networks are easily reached as it is approx 5.4 miles from the M4 junction 13 and 7.8 miles to Junction 14. Likewise Cam/Dursley has its own train link to Bristol. The very popular Rednock Secondary School (recently refurbished), plus there is a selection of local shops, Swimming pool, and a Sainsbury store.



Local Authority & Council Tax

StroudDistrictCouncil
Council Tax Band - A



Contact & Viewing

T: 01454 417336
w: www.milburys.co.uk

Ground Floor

Approx. 39.4 sq. metres (424.3 sq. feet)



Total area: approx. 39.4 sq. metres (424.3 sq. feet)

Ground Floor

Approx. 39.4 sq. metres (424.3 sq. feet)



Total area: approx. 39.4 sq. metres (424.3 sq. feet)

Additional Photos

Important Notice

Milburys Estate Agents Ltd, their clients and any joint agents give notice that they have not tested any apparatus, equipment, fixtures, fittings, heating systems, drains or services and so cannot verify they are in working order or fit for their purpose. Interested parties are advised to obtain verification from their surveyor or relevant contractor. Statements pertaining to tenure are also given in good faith and should be verified by your legal representative. Digital images may, on occasion, include the use of a wide-angle lens. Please ask if you have any queries about any of the images shown, prior to viewing. Where provided, floor plans are shown purely as an indication of layout. They are not scale drawings and should not be treated as such. Complete listings and full details of all our properties (both for sale and to let) are available at www.milburys.co.uk