

## Maisonette 'To Let'

£895 PCM

Morley Lane, 13 - 15 Long Street



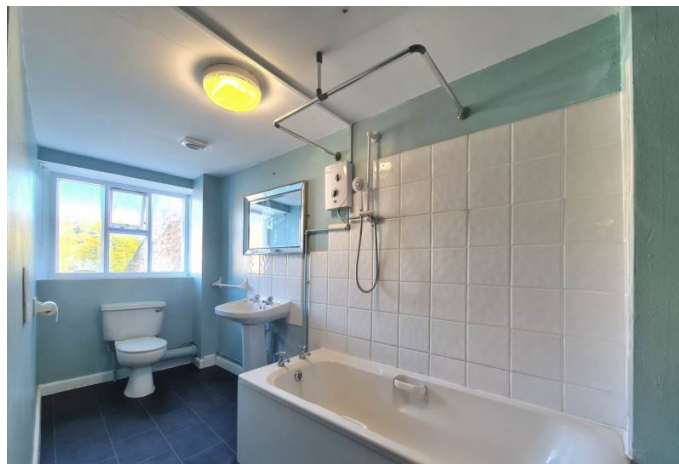
### KEY FEATURES

Ground Floor Apartment – Own Private Entrance – Set Back from Wotton-under-Edge High Street – Entrance Hall – Communal Garden – Kitchen with Cooker/Hob - Large Double Bedroom - Bathroom with Shower over Bath - Electric Heating – Allocated Parking - Unfurnished.

**EPC - E - DEPOSIT £1032.00**

## Description

Set back from Wotton-under-Edge High Street and benefitting from its own private entrance is this spacious first floor maisonette. Accommodation is split over two floors and includes an entrance hall, double bedroom, large bathroom, kitchen/diner with cooker/hob and a bright and airy living room. This lovely property has an abundance of character and period charm. Outside there is a shared communal garden and allocated parking for one car. Available from the start of November 2024 for six months to long term. No smokers. (EPC-E.)



## Situation

Situated on the Cotswold Way, this charming character Market Town has an eclectic mix of local shops and businesses on its vibrant High Street. Golf courses, beautiful surrounding countryside plus access to Tetbury (approx 10.1 miles), Cirencester, Bristol and the M5 (Junction 14 is approx 5.1 miles) make an ideal location for families, commuters and outdoor enthusiasts. The nearby Katharine Lady Berkeley's Secondary School (approx 0.7 miles) is an important element in the town plus there are two Primary schools in Wotton under Edge.



## Local Authority & Council Tax

StroudDistrictCouncil  
Council Tax Band - A



## Contact & Viewing

T: 01454 417336  
w: [www.milburys.co.uk](http://www.milburys.co.uk)



## Floorplan



## Additional Photos



## Important Notice

Milburys Estate Agents Ltd, their clients and any joint agents give notice that they have not tested any apparatus, equipment, fixtures, fittings, heating systems, drains or services and so cannot verify they are in working order or fit for their purpose. Interested parties are advised to obtain verification from their surveyor or relevant contractor. Statements pertaining to tenure are also given in good faith and should be verified by your legal representative. Digital images may, on occasion, include the use of a wide-angle lens. Please ask if you have any queries about any of the images shown, prior to viewing. Where provided, floor plans are shown purely as an indication of layout. They are not scale drawings and should not be treated as such. Complete listings and full details of all our properties (both for sale and to let) are available at [www.milburys.co.uk](http://www.milburys.co.uk)