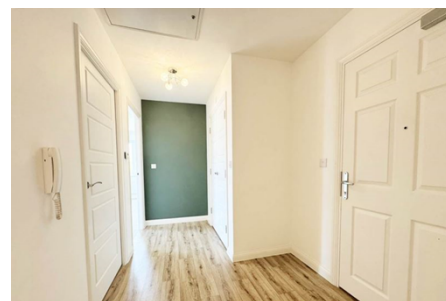


Apartment 'To Let'
£1,200 PCM
Scythe Way, Thornbury



KEY FEATURES

Modern Two Bedroom, Second Floor Apartment - Parkland Views - Well-Maintained Development With Country Rambles From The Door - Living/Dining Area With Plenty Of Space For Both Dining And Living Suite - Smart Fitted Kitchen With Built In Utilities - Two Sizeable Double Bedrooms, One With Built In Storage - Pristine Family Bathroom With Shower Over - Useful Lockable Bike And Bin Storage - Allocated Parking Plus Guest Parking
EPC - B - DEPOSIT £1384.00

Description

This modern two-bedroom apartment is situated on the second floor of a highly sought-after development in Thornbury, offering stylish and spacious living with picturesque views over beautifully maintained parkland. Designed with contemporary lifestyles in mind, the open-plan layout seamlessly integrates the living, dining, and fully fitted kitchen area—complete with integral appliances—making it ideal for both everyday living and entertaining. The property features two generously sized double bedrooms, including a principal bedroom with fitted wardrobes, a sleek family bathroom, and three handy storage cupboards, one of which serves as a utility area. Additional benefits include an allocated parking space, visitor parking, and access to secure bike and bin stores. This well-presented apartment is perfect for tenants seeking comfort and convenience in a prime location. Available now.



Situation

Thornbury is a thriving market town to the north of the City of Bristol and the M4/M5 interchange, with excellent commuting links via the motorway network and by rail from Bristol Parkway Station (Paddington/South Wales). The pedestrianised High Street offers a wide variety of shops, cafes, pubs and restaurants. Other facilities include the leisure centre, golf course and library, plus open community spaces, parks and sports grounds/clubs. The town is blessed with a number of primary and junior schools, plus The Castle secondary school (www.thecastleschool.org.uk) which is situated close to Thornbury's Tudor Castle, a luxury hotel.



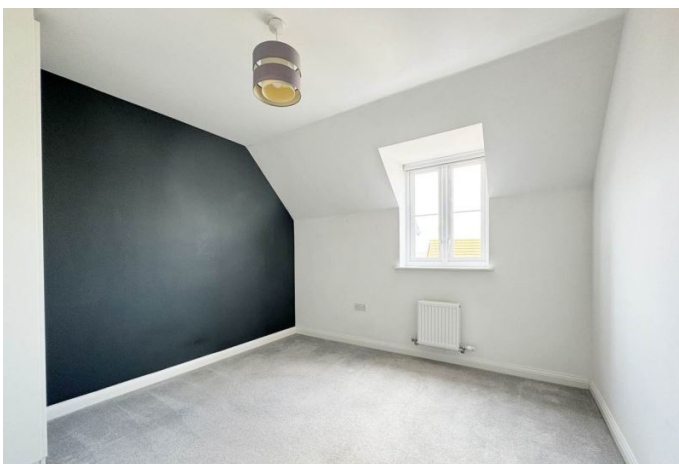
Local Authority & Council Tax

South Gloucestershire Council
Council Tax Band - B



Contact & Viewing

T: 01454 417336
w: www.milburys.co.uk



Floorplan

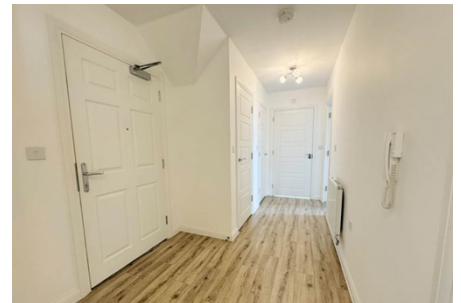
Apartment

Approx. 66.6 sq. metres (717.2 sq. feet)



Total area approx. 66.6 sq. metres (717.2 sq. feet)

Additional Photos



Important Notice

Milburys Estate Agents Ltd, their clients and any joint agents give notice that they have not tested any apparatus, equipment, fixtures, fittings, heating systems, drains or services and so cannot verify they are in working order or fit for their purpose. Interested parties are advised to obtain verification from their surveyor or relevant contractor. Statements pertaining to tenure are also given in good faith and should be verified by your legal representative. Digital images may, on occasion, include the use of a wide-angle lens. Please ask if you have any queries about any of the images shown, prior to viewing. Where provided, floor plans are shown purely as an indication of layout. They are not scale drawings and should not be treated as such. Complete listings and full details of all our properties (both for sale and to let) are available at www.milburys.co.uk