



House 'To Let'

£1,795 PCM

Hopkins Close, Thornbury



#### KEY FEATURES

EPC - D - DEPOSIT £2071.00

## Description

This beautifully presented four-bedroom detached family home, situated in a sought-after cul-de-sac location, has been tastefully redecorated throughout to a very high standard. Offering generous and versatile living space, it is perfectly suited to a growing family. Upon entering, you are welcomed by a spacious entrance hall that leads to a bright and expansive living room, seamlessly connected to the dining area. Additional ground floor features include a separate office/playroom, a cloakroom, and a well-appointed kitchen/breakfast room with access to a convenient utility room. The first floor comprises four well-proportioned bedrooms. The master bedroom benefits from a generous en-suite, while bedroom two also enjoys a modern en-suite shower room and fitted wardrobes. Bedroom three features built-in wardrobes, and a contemporary family shower room serves the remaining rooms. Externally, the property offers off-street parking for two cars, side access to a private rear garden with a patio area, and a useful garden shed.



## Situation



## Local Authority & Council Tax

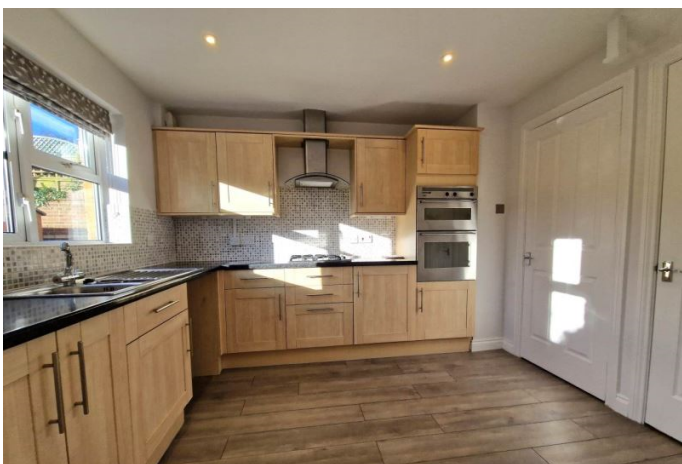
Council Tax Band - E



## Contact & Viewing

T: 01454 417336

w: [www.milburys.co.uk](http://www.milburys.co.uk)





## Floorplan



## Additional Photos



## Important Notice

Milburys Estate Agents Ltd, their clients and any joint agents give notice that they have not tested any apparatus, equipment, fixtures, fittings, heating systems, drains or services and so cannot verify they are in working order or fit for their purpose. Interested parties are advised to obtain verification from their surveyor or relevant contractor. Statements pertaining to tenure are also given in good faith and should be verified by your legal representative. Digital images may, on occasion, include the use of a wide-angle lens. Please ask if you have any queries about any of the images shown, prior to viewing. Where provided, floor plans are shown purely as an indication of layout. They are not scale drawings and should not be treated as such. Complete listings and full details of all our properties (both for sale and to let) are available at [www.milburys.co.uk](http://www.milburys.co.uk)