



Barn Conversion 'To Let'

£1,495 PCM

Freemans Farm, Itchington



KEY FEATURES

Two-Bedroom - Detached Barn - Kitchen/Dining Area - Lounge - Utility Room - Master Bedroom With En-Suite Shower Room - Bedroom Two With Fitted Wardrobe - En-Suite Shower Room - Good Size Garden - Off Road Parking - Village Location - Unfurnished.

EPC - C - DEPOSIT £1725.00

Description

This two bedroom detached barn is situated in a rural village location and is offered on an unfurnished basis. The accommodation has just been redecorated throughout and comprises; hallway, open plan kitchen/dining area with electric cooker/ Induction hob, integrated fridge and dishwasher, utility room, lounge, double bedroom with en-suite shower room complete the downstairs living accommodation. Upstairs you have a double bedroom with a built-in wardrobe leading into the spacious en-suite shower room. Further benefits include oil fired c/h (underfloor heating), double glazing, enclosed garden and off-road parking for 2 cars. Please note that this property is on a working farm which means that pets are not permitted. Available end of August for six months to long term. EPC-C. To check broadband and mobile phone coverage please visit Ofcom - ofcom.org.uk/phones-telecoms-and-internet/advice-for-consumers/advice/ofcom-checker



Situation

The village of Itchington is situated a short drive south of M5 Junction 14 - ideal for commuters to Bristol or Cheltenham/Gloucester. The nearby local centres of Thornbury and Wotton-under-Edge provide excellent shopping facilities and amenities. Locally the village of Tytherington has a community shop with post office, a public house, church and a playgroup in the village hall. The excellent village website www.tytherington.com provides a wealth of further information.



Local Authority & Council Tax

Council Tax Band -

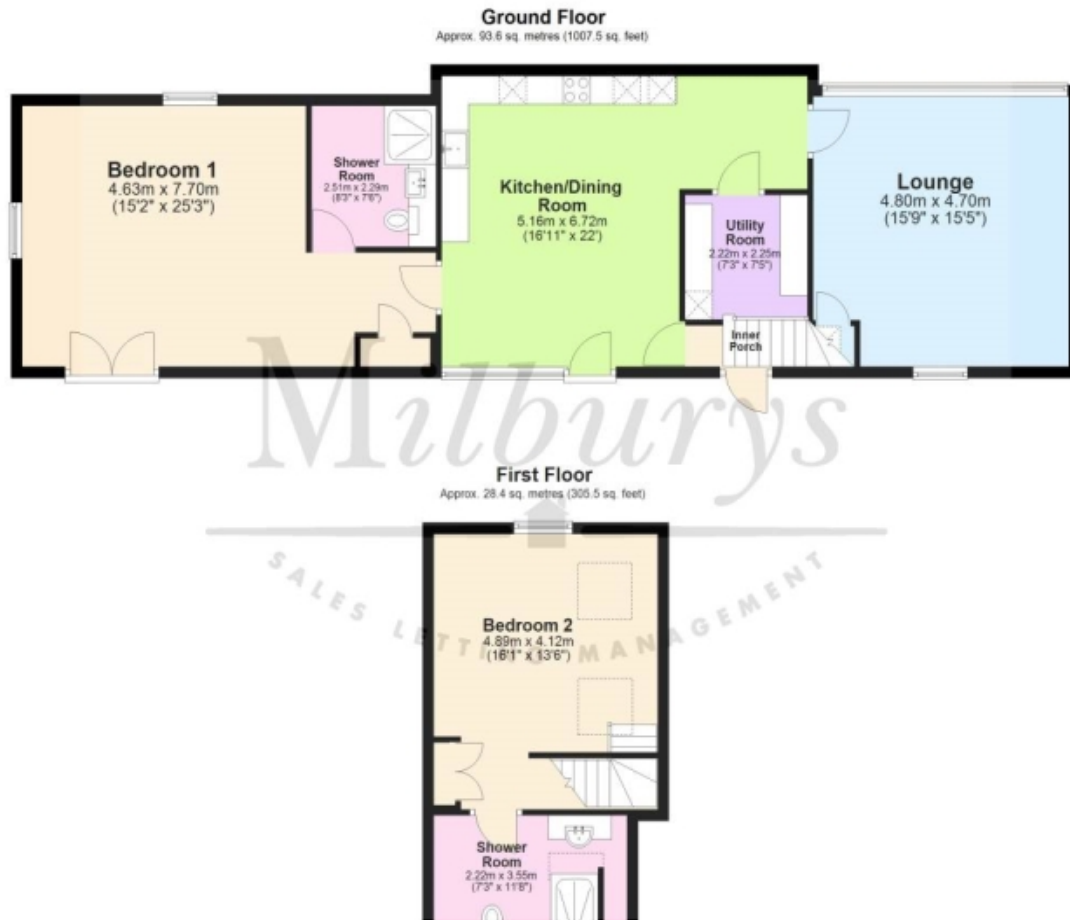


Contact & Viewing

T: 01454 417336
w: www.milburys.co.uk



Floorplan



Additional Photos



Important Notice

Milburys Estate Agents Ltd, their clients and any joint agents give notice that they have not tested any apparatus, equipment, fixtures, fittings, heating systems, drains or services and so cannot verify they are in working order or fit for their purpose. Interested parties are advised to obtain verification from their surveyor or relevant contractor. Statements pertaining to tenure are also given in good faith and should be verified by your legal representative. Digital images may, on occasion, include the use of a wide-angle lens. Please ask if you have any queries about any of the images shown, prior to viewing. Where provided, floor plans are shown purely as an indication of layout. They are not scale drawings and should not be treated as such. Complete listings and full details of all our properties (both for sale and to let) are available at www.milburys.co.uk