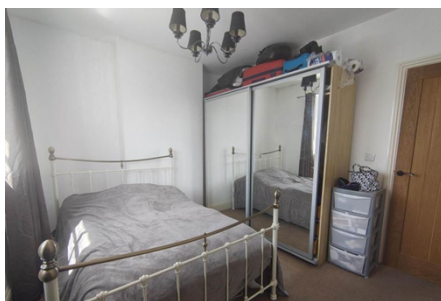
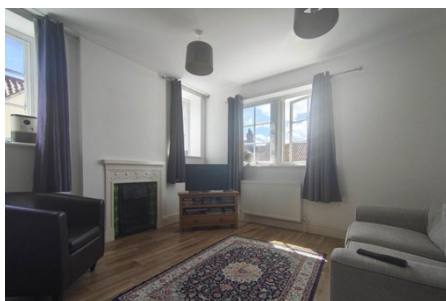




Flat / Apartment 'To Let'
£1,100 PCM
Chapel Street, Thornbury



KEY FEATURES

Modern - Two Bedroom First Floor Flat - Open Plan Kitchen/Lounge - Shower Room - Utility Cupboard - Gas C/H - White Goods - Unfurnished
EPC - `[[EPCImages.EERImage.CurrentAsLetter]]` - DEPOSIT £1269.23

Description

Situated just a stones throw away from Thornbury High Street. This modern two bedroom first floor flat, has been updated to a high standard and comprises open plan kitchen/lounge with fitted white goods, shower room, one double bedroom and one single bedroom, utility cupboard housing washer/dryer. This property benefits from gas central heating and secondary glazing. Available 22nd January 2024 for six months to long term. Not suitable for pets or children.



Situation

Thornbury is a thriving market town to the north of the City of Bristol and the M4/M5 interchange, with excellent commuting links via the motorway network and by rail from Bristol Parkway Station (Paddington/South Wales). The High Street offers a wide variety of shops, cafes, pubs and restaurants. Other facilities include the leisure centre, golf course and library, plus open community spaces, parks and sports grounds/clubs. The town is blessed with a number of primary and junior schools, plus The Castle secondary school (www.castle.gloucs.sch.uk) which is situated on the edge of open countryside close to Thornbury's Tudor Castle, now a luxury hotel.



Local Authority & Council Tax

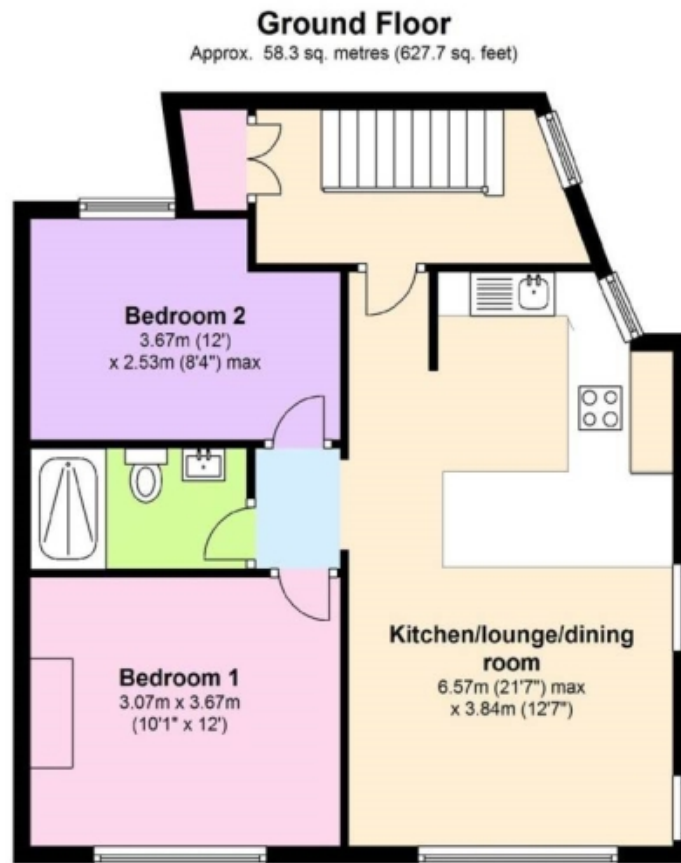
SouthGloucestershireCouncil
Council Tax Band - A



Contact & Viewing

T: 01454 417336
w: www.milburys.co.uk

Floorplan



Additional Photos

Important Notice

Milburys Estate Agents Ltd, their clients and any joint agents give notice that they have not tested any apparatus, equipment, fixtures, fittings, heating systems, drains or services and so cannot verify they are in working order or fit for their purpose. Interested parties are advised to obtain verification from their surveyor or relevant contractor. Statements pertaining to tenure are also given in good faith and should be verified by your legal representative. Digital images may, on occasion, include the use of a wide-angle lens. Please ask if you have any queries about any of the images shown, prior to viewing. Where provided, floor plans are shown purely as an indication of layout. They are not scale drawings and should not be treated as such. Complete listings and full details of all our properties (both for sale and to let) are available at www.milburys.co.uk