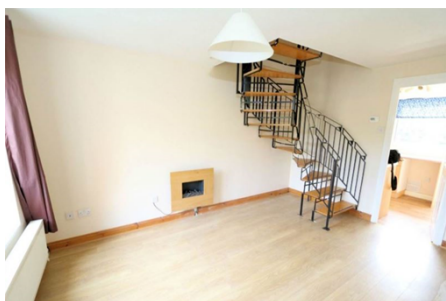




## Terraced House 'To Let'

£1,150 PCM

Osprey Park, Thornbury



### KEY FEATURES

Two Bedroom - Mid Terraced House - Gas C/H - Double Glazing - Kitchen/Breakfast Area - Lounge - Bathroom With Shower Over Bath - Garden To The Rear - Two Parking Spaces

**EPC - D - DEPOSIT £1326.00**

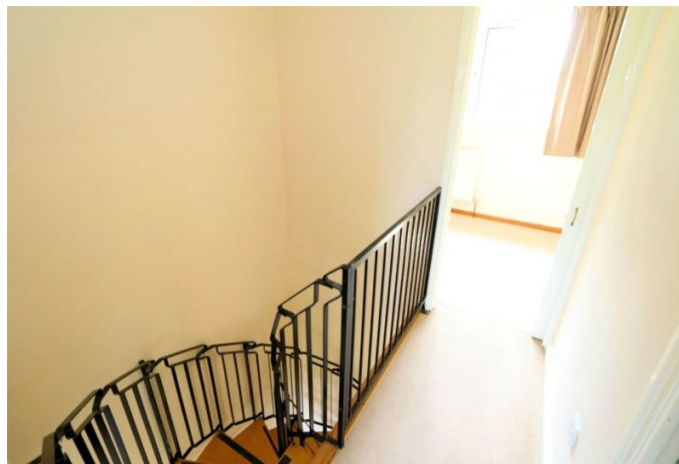
## Description

A well presented two bedroom mid terrace house with gas central heating and double glazing. The accommodation is offered on an unfurnished basis and comprises lounge with electric feature wall mounted fire, spiral staircase to first floor, kitchen/breakfast area and bathroom with electric shower over bath. There is an enclosed rear garden with gate leading to adjoining open playing field and allocated parking for two cars. Would ideally suit a professional single person or couple. Pets by negotiation and non smokers only. Available end of September for six months to long term. (EPC - C)



## Situation

Thornbury is a thriving market town where the High Street offers a variety of shops, cafes, pubs and restaurants. Facilities include the Leisure Centre, Golf Course and Library. The town is blessed with a number of primary and junior schools, plus The Castle secondary school ([www.castle.gloucs.sch.uk](http://www.castle.gloucs.sch.uk)) which is situated on the edge of open countryside close to Thornbury Castle.



## Local Authority & Council Tax

South Gloucestershire Council  
Council Tax Band - B



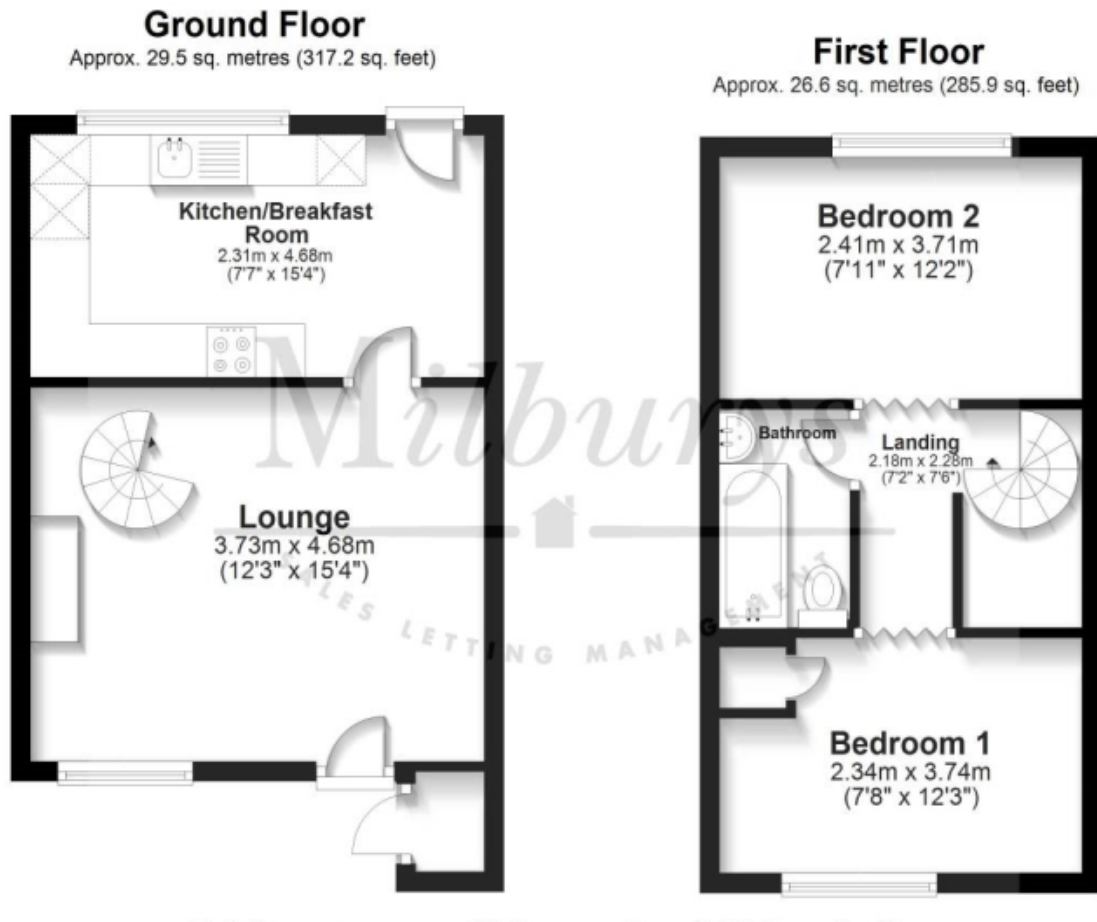
## Contact & Viewing

T: 01454 417336  
w: [www.milburys.co.uk](http://www.milburys.co.uk)





## Floorplan



## Additional Photos



## Important Notice

Milburys Estate Agents Ltd, their clients and any joint agents give notice that they have not tested any apparatus, equipment, fixtures, fittings, heating systems, drains or services and so cannot verify they are in working order or fit for their purpose. Interested parties are advised to obtain verification from their surveyor or relevant contractor. Statements pertaining to tenure are also given in good faith and should be verified by your legal representative. Digital images may, on occasion, include the use of a wide-angle lens. Please ask if you have any queries about any of the images shown, prior to viewing. Where provided, floor plans are shown purely as an indication of layout. They are not scale drawings and should not be treated as such. Complete listings and full details of all our properties (both for sale and to let) are available at [www.milburys.co.uk](http://www.milburys.co.uk)