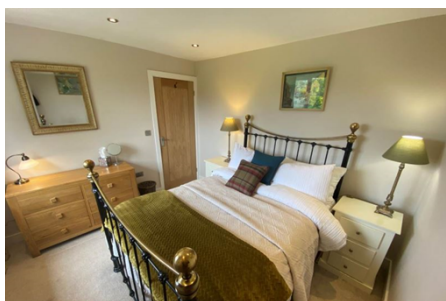




Maisonette 'To Let'
£1,095 PCM
Lower Stone, Nr Berkeley



KEY FEATURES

(All Bills Included) - Converted One Bedroom - Annexe - Open Plan Kitchen/Lounge/Dining Area - Wet Room - Double Bedroom With Country Views - Gated Parking - Private Patio Area Over Looking Countryside - Fully Furnished - EPC-
EPC - G - DEPOSIT £1263.00

Description

ALL UTILITY BILLS INCLUDED!. This is a beautifully presented contemporary annexe conversion with far-reaching views over the adjacent farmland. Inside you are welcomed with stylish living accommodation including wooden flooring complementing a luxury fitted kitchen, open plan lounge/dining area with fitted cupboard, double bedroom with rural views and wet room. Outside there is parking and space to store a bike, private patio area overlooking open countryside. Luxury fully furnished accommodation .Would suit single person or couple. A pet would be considered. Available now. EPC-D



Situation

The village of Stone is situated approximately 1 mile from junction 14 of the M5 ideal for commuting to Gloucester to the north and Bristol to the south. There is a local primary school in the village and local secondary schools include The Castle School in Thornbury and Katherine Lady Berkeley in Kingswood. In nearby Falfield, approximately one mile away, is a general store and post office and Thornbury with its range of amenities is approximately 4 miles distance providing supermarkets, post office, restaurants and Leisure Centre/Golf Club.



Local Authority & Council Tax

Council Tax Band -

Ground Floor

Approx. 39.6 sq. metres (426.4 sq. feet)



Total area: approx. 39.6 sq. metres (426.4 sq. feet)

Contact & Viewing

T: 01454 417336

w: www.milburys.co.uk



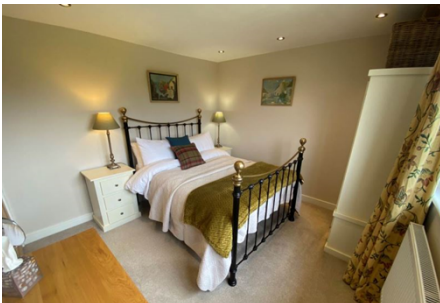
Floorplan

Ground Floor

Approx. 39.6 sq. metres (426.4 sq. feet)



Additional Photos



Important Notice

Milburys Estate Agents Ltd, their clients and any joint agents give notice that they have not tested any apparatus, equipment, fixtures, fittings, heating systems, drains or services and so cannot verify they are in working order or fit for their purpose. Interested parties are advised to obtain verification from their surveyor or relevant contractor. Statements pertaining to tenure are also given in good faith and should be verified by your legal representative. Digital images may, on occasion, include the use of a wide-angle lens. Please ask if you have any queries about any of the images shown, prior to viewing. Where provided, floor plans are shown purely as an indication of layout. They are not scale drawings and should not be treated as such. Complete listings and full details of all our properties (both for sale and to let) are available at www.milburys.co.uk