



House 'To Let'

£2,300 PCM

Eastfield Road, Westbury On Trym



#### KEY FEATURES

Three Bedroom Detached Cottage - Set Over Three Floors - Entrance Porch - Open Plan Living/Dining Room - Bathroom With Shower Over Bath - Modern Kitchen (Fitted White Goods Include A Cooker/ Hob, Dishwasher, Washing Machine & Wine Cooler) - Ground Floor Is Completed By A Useful Home Office/Bedroom Three With Private Entrance , Utility Room, Shower Room, Storage/Study/Craft Room  
Complete The Ground Floor - EPC-D

**EPC - D - DEPOSIT £2653.00**



## Description

Originally built in 1870's, this charming period detached home is set out over three floors, full of character this accommodation boasting period features along with modern luxuries. The house itself comprises of a entrance porch, leading into the spacious open plan sitting room/dining room, modern bathroom and kitchen with fitted white goods complete the first floor. The ground floor is completed by a useful office/bedroom three with private entrance and storage cupboard, utility room, shower room, storage/study/craft room complete the ground floor. On the first floor you will find two further double bedrooms (one with fitted cupboard and the other with free standing wardrobes) and a share a shower room is tucked between both rooms. Outside you have off street parking for two cars and an-closed, low maintenance patio area to front with a small private decking area to the side. The property further benefits from gas central heating, double glazing, and modern fittings throughout! Viewings highly recommended Located close to the High Street of



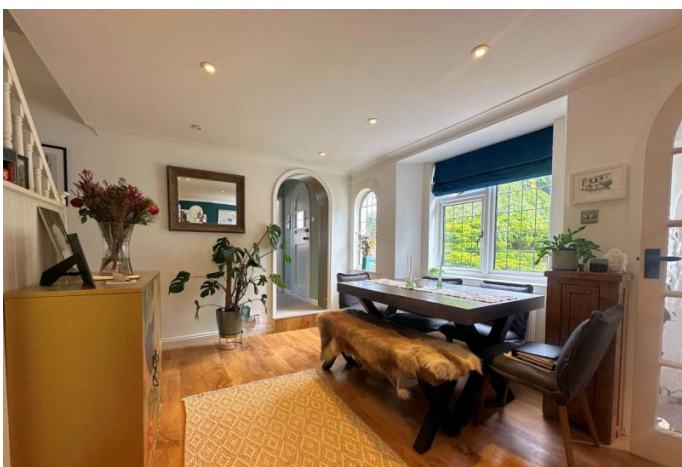
## Situation

Westbury on Trym is a suburb and council ward in the north of the City of Bristol, near the suburbs of Stoke Bishop, Westbury Park, Henleaze, in the southwest of England. The local schools are within a short walk being in Westbury On Trym Primary School, Bristol Free School and Red Maids High School, and Badminton both within walking distance. At the heart of the village is a war memorial where the three main shopping streets, High Street, Canford Lane and Westbury Hill converge together. The village has free parking too!



## Local Authority & Council Tax

Council Tax Band - E



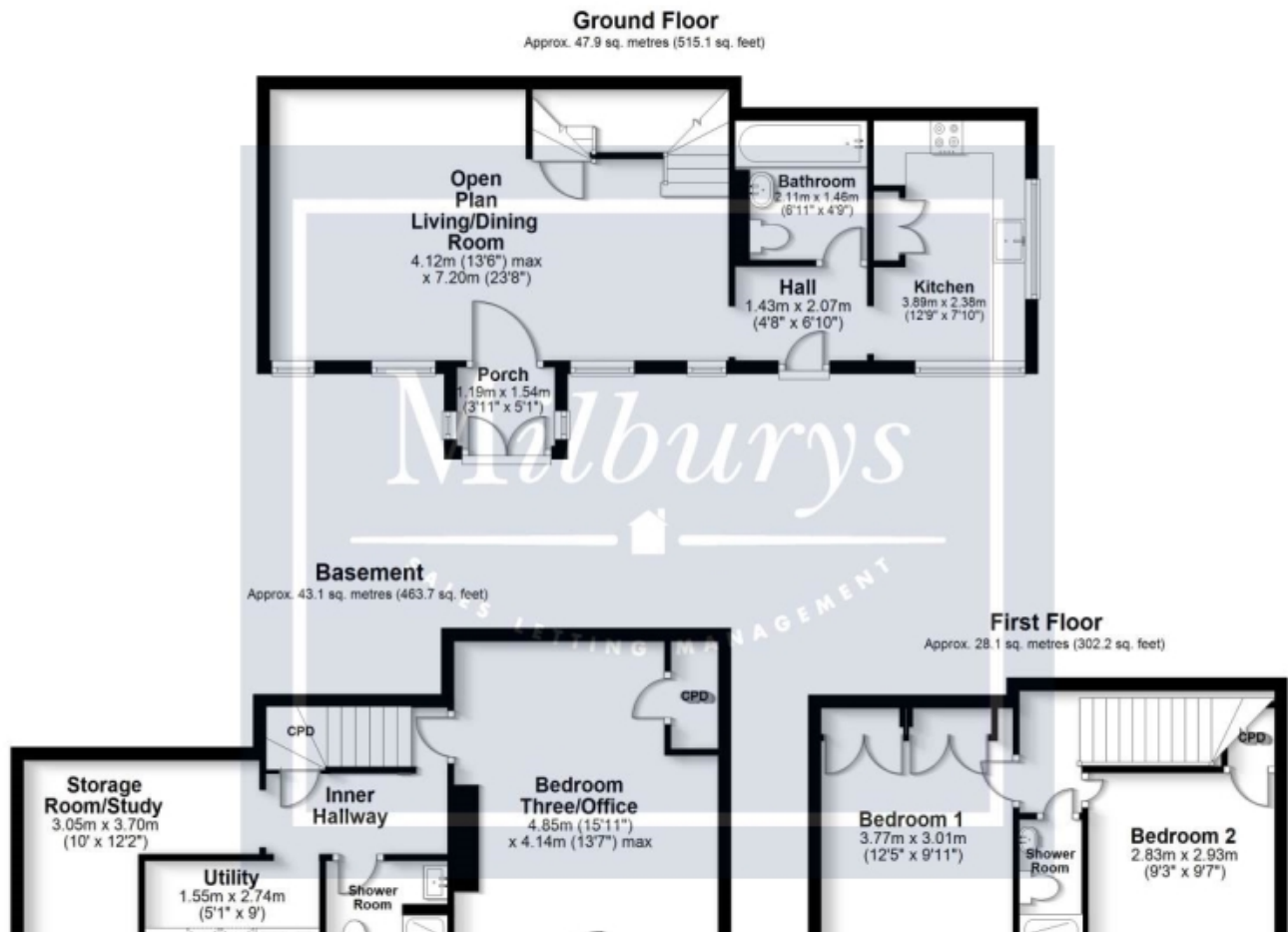
## Contact & Viewing

T: 01454 417336

w: [www.milburys.co.uk](http://www.milburys.co.uk)



## Floorplan



## Additional Photos



## Important Notice

Milburys Estate Agents Ltd, their clients and any joint agents give notice that they have not tested any apparatus, equipment, fixtures, fittings, heating systems, drains or services and so cannot verify they are in working order or fit for their purpose. Interested parties are advised to obtain verification from their surveyor or relevant contractor. Statements pertaining to tenure are also given in good faith and should be verified by your legal representative. Digital images may, on occasion, include the use of a wide-angle lens. Please ask if you have any queries about any of the images shown, prior to viewing. Where provided, floor plans are shown purely as an indication of layout. They are not scale drawings and should not be treated as such. Complete listings and full details of all our properties (both for sale and to let) are available at [www.milburys.co.uk](http://www.milburys.co.uk)