



House 'To Let'

£1,195 PCM

Bluebell Close, Thornbury



KEY FEATURES

Well presented – Entrance Porch – Hallway – Open Plan Kitchen/Living Space With Wood Burning Stove – Modern Kitchen With White Goods– Master Bedroom With Free Standing Wardrobe -& En-Suite Shower Room – Bedroom Two Is A Double With Fitted Cupboard- Loft Access With Storage - Mid-Terrace House - Gas Central Heating - Double Glazing - Cul-De-Sac Location - Allocated Parking - Unfurnished
EPC - [[EPCImages.EERImage.CurrentAsLetter]] - DEPOSIT £1378.00

Description

This smartly presented two-bedroom mid-terrace house is situated in a cul-de-sac location with good access to local amenities. The property is offered on an unfurnished basis and comprises, entrance porch, hallway, open plan kitchen/living space with feature wood burning stove and a modern fitted kitchen with white goods. Upstairs you have the main bedroom with a free standing wardrobe and en-suite shower room, bathroom with shower over bath, a second double bedroom with a fitted cupboard and loft access with storage. The property further benefits from an enclosed rear garden, Upvc double-glazing, gas central heating and allocated parking for two cars. Non Smokers. Available 1st March 2025.



Situation

Thornbury is a thriving market town to the north of the City of Bristol and the M4/M5 interchange, with excellent commuting links via the motorway network and by rail from Bristol Parkway Station (Paddington/South Wales). The High Street offers a wide variety of shops, cafes, pubs and restaurants. Other facilities include the leisure centre, golf course and library, plus open community spaces, parks and sports grounds/clubs. The town is blessed with a number of primary and junior schools, plus The Castle secondary school (www.castle.gloucs.sch.uk) which is situated on the edge of open countryside close to Thornburys Tudor Castle, now a luxury hotel.



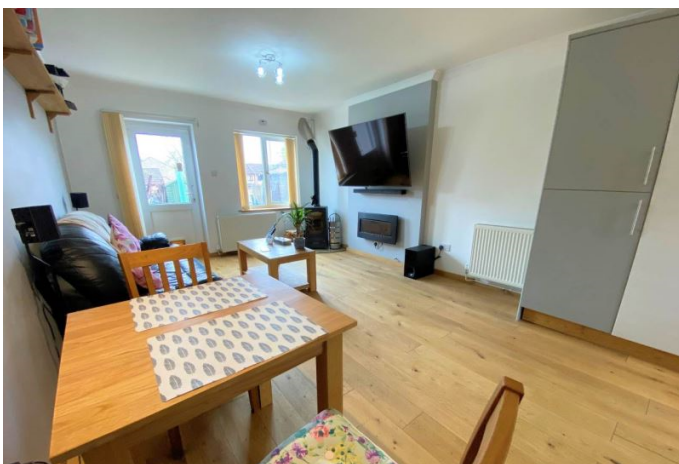
Local Authority & Council Tax

South Gloucestershire Council
Council Tax Band - B

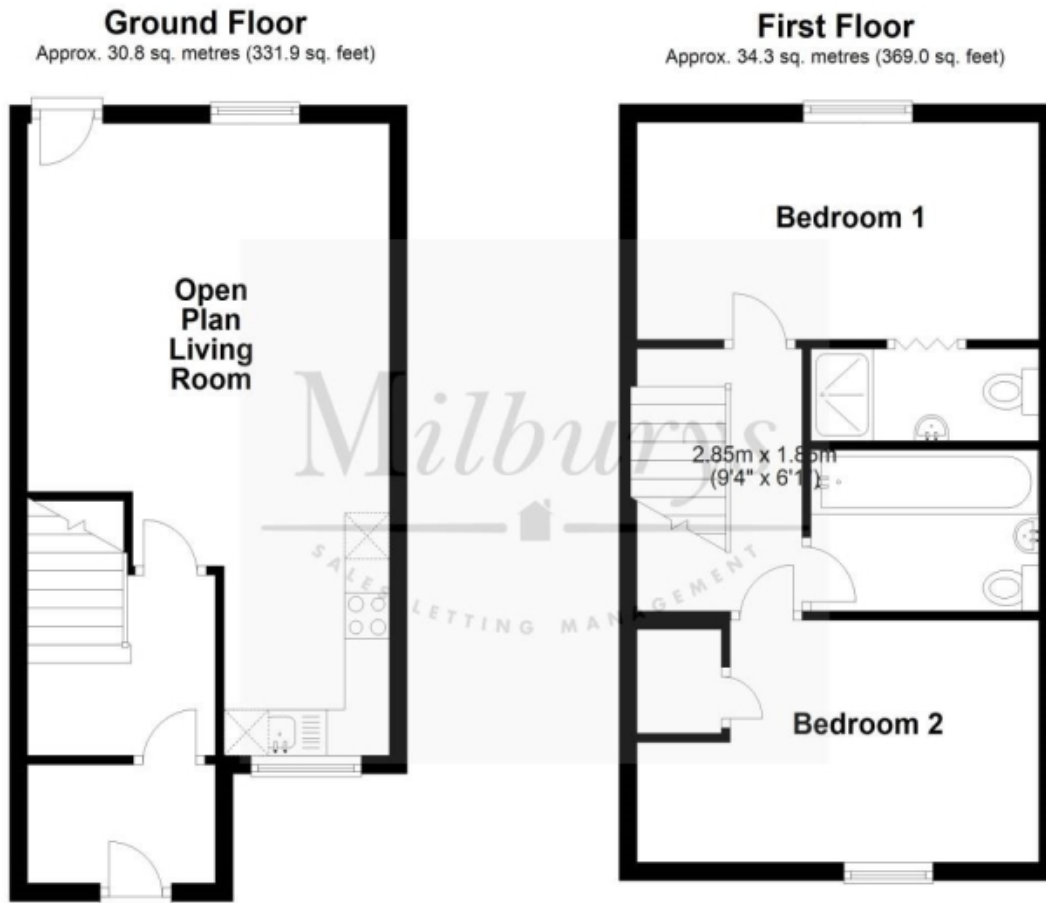


Contact & Viewing

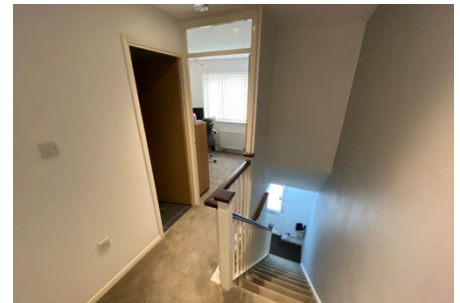
T: 01454 417336
w: www.milburys.co.uk



Floorplan



Additional Photos



Important Notice

Milburys Estate Agents Ltd, their clients and any joint agents give notice that they have not tested any apparatus, equipment, fixtures, fittings, heating systems, drains or services and so cannot verify they are in working order or fit for their purpose. Interested parties are advised to obtain verification from their surveyor or relevant contractor. Statements pertaining to tenure are also given in good faith and should be verified by your legal representative. Digital images may, on occasion, include the use of a wide-angle lens. Please ask if you have any queries about any of the images shown, prior to viewing. Where provided, floor plans are shown purely as an indication of layout. They are not scale drawings and should not be treated as such. Complete listings and full details of all our properties (both for sale and to let) are available at www.milburys.co.uk