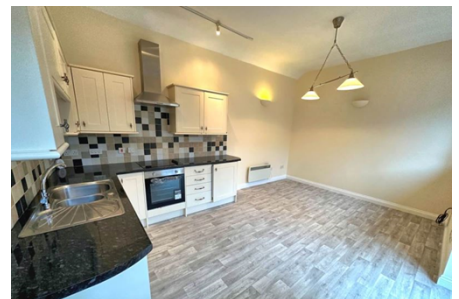




Barn 'To Let'

£910 PCM

Hill Farm Barns, Frocester



KEY FEATURES

Entrance Hall With Storage Cupboard - Bedroom With Wardrobed & Storage Cupboard - Shower Room With WC, Sink & Walk In Shower Cubical - Open Plan Living Space With Kitchen (Integrated Oven/Hob & Fridge), French Doors Leading Out To Parking Area - Outside There Is One Allocated Parking Space To The Side Of The Property & One Allocated Space Within The Communal Car Park - The Garden Is Mostly Laid To Lawn With A Patio Area, There Are Beautiful Views Across The Local Countryside.

EPC - E - DEPOSIT £1050.00

Description

Situated within a small development of nine barn conversions on Frocester Hill, this one bedroom detached barn offers character features throughout with an open plan kitchen/living area with electric hob/oven and built in fridge, double bedroom and shower room. The property further benefits from wooden panelled double glazing, economy seven heating, two allocated parking spaces and a generous garden, offering stunning viewings across to the River Severn and beyond as well as Frocester Hill, this development is an opportunity not to be missed. Available unfurnished for six month to long term. EPC - E



Situation

The small village of Frocester is located below the Cotswold escarpment and is situated approximately 4 miles West of Stroud. Within the village there is The George Inn public house, cricket club and is well known for its annual beer festival. Stonehouse town is approximately 2 miles away with many local amenities to include a Co op with post office, several shops and a local pub. Stonehouse train station has a mainline to London Paddington. Junction 13 of the M5 motorway is approximately 3 miles, providing easy access to Gloucester, Bristol and Cheltenham.



Local Authority & Council Tax

Council Tax Band - B



Contact & Viewing

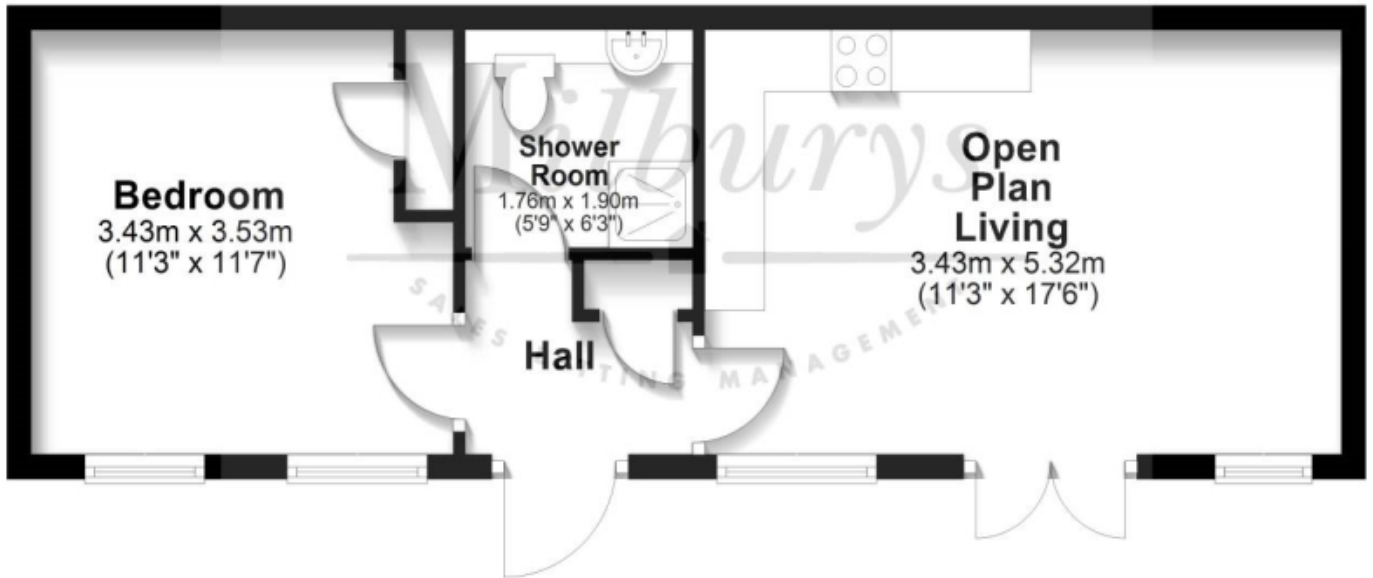
T: 01454 417336

w: www.milburys.co.uk



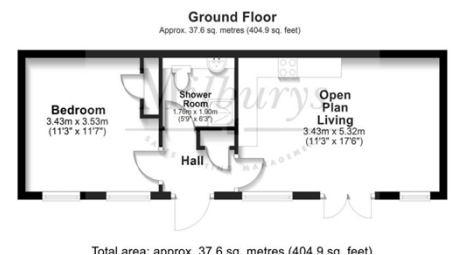
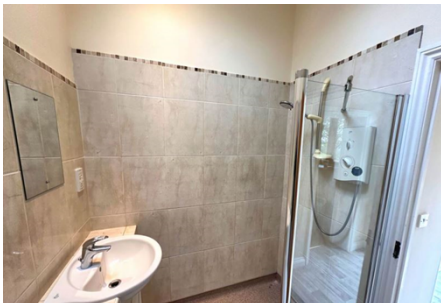
Ground Floor

Approx. 37.6 sq. metres (404.9 sq. feet)



Total area: approx 37.6 sq. metres (404.9 sq. feet)

Additional Photos



Important Notice

Milburys Estate Agents Ltd, their clients and any joint agents give notice that they have not tested any apparatus, equipment, fixtures, fittings, heating systems, drains or services and so cannot verify they are in working order or fit for their purpose. Interested parties are advised to obtain verification from their surveyor or relevant contractor. Statements pertaining to tenure are also given in good faith and should be verified by your legal representative. Digital images may, on occasion, include the use of a wide-angle lens. Please ask if you have any queries about any of the images shown, prior to viewing. Where provided, floor plans are shown purely as an indication of layout. They are not scale drawings and should not be treated as such. Complete listings and full details of all our properties (both for sale and to let) are available at www.milburys.co.uk