



## Detached House 'To Let'

£1,495 PCM

Woodlands Road, Charfield



### KEY FEATURES

Detached Modern Home - Three Bedrooms - Spacious Lounge - Modern Kitchen - Dining Room- Garage - Garden - Parking - Double Glazing - Gas Central Heating.

**EPC - D - DEPOSIT £1725.00**



## Description

Nestled in the highly sought-after village of Charfield, this spacious and modern three-bedroom detached property offers comfortable living and a delightful garden space. The accommodation comprises a welcoming hallway, convenient cloakroom, a generous lounge that flows into a bright dining room and a contemporary kitchen. Upstairs, you'll find three well-appointed bedrooms and a modern family bathroom. Additional benefits include a garage, parking, and efficient gas central heating. With easy access to the nearby town of Wotton-Under-Edge and the picturesque surrounding countryside, this home is ideally situated for a balanced lifestyle. Council tax band C



## Situation

The village of Charfield is situated to the north of Thornbury and Chipping Sodbury on the B4058, approximately 2.5 mile from Junction 14 of the M5 at Falfield, connecting from there directly to Bristol in the south and Cheltenham/Gloucester to the north. The local market town of Wotton-under-Edge is approximately 2.5 miles further to the east, passing the road to Katharine Lady Berkeley secondary school on route. Charfield has a primary school, a selection of shops, a post office, public houses, and a petrol station.



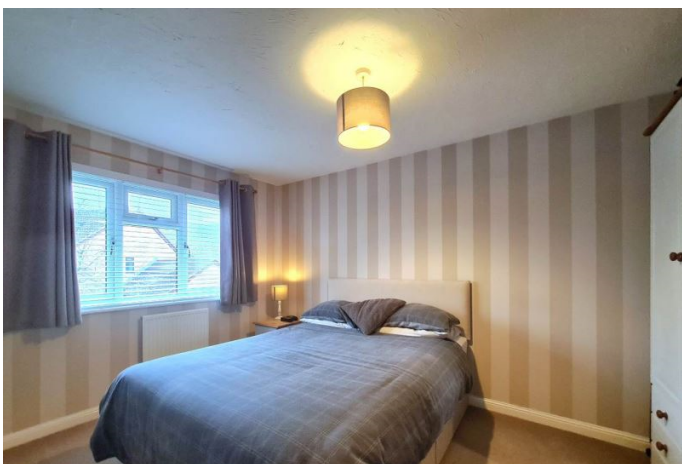
## Local Authority & Council Tax

South Gloucestershire Council  
Council Tax Band - C



## Contact & Viewing

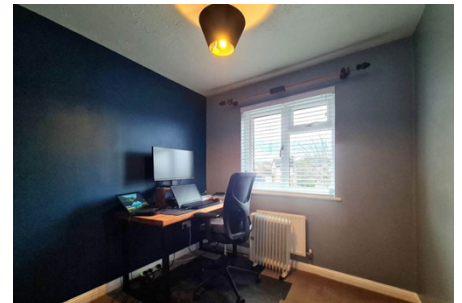
T: 01454 417336  
w: [www.milburys.co.uk](http://www.milburys.co.uk)



## Floorplan



## Additional Photos



## Important Notice

Milburys Estate Agents Ltd, their clients and any joint agents give notice that they have not tested any apparatus, equipment, fixtures, fittings, heating systems, drains or services and so cannot verify they are in working order or fit for their purpose. Interested parties are advised to obtain verification from their surveyor or relevant contractor. Statements pertaining to tenure are also given in good faith and should be verified by your legal representative. Digital images may, on occasion, include the use of a wide-angle lens. Please ask if you have any queries about any of the images shown, prior to viewing. Where provided, floor plans are shown purely as an indication of layout. They are not scale drawings and should not be treated as such. Complete listings and full details of all our properties (both for sale and to let) are available at [www.milburys.co.uk](http://www.milburys.co.uk)